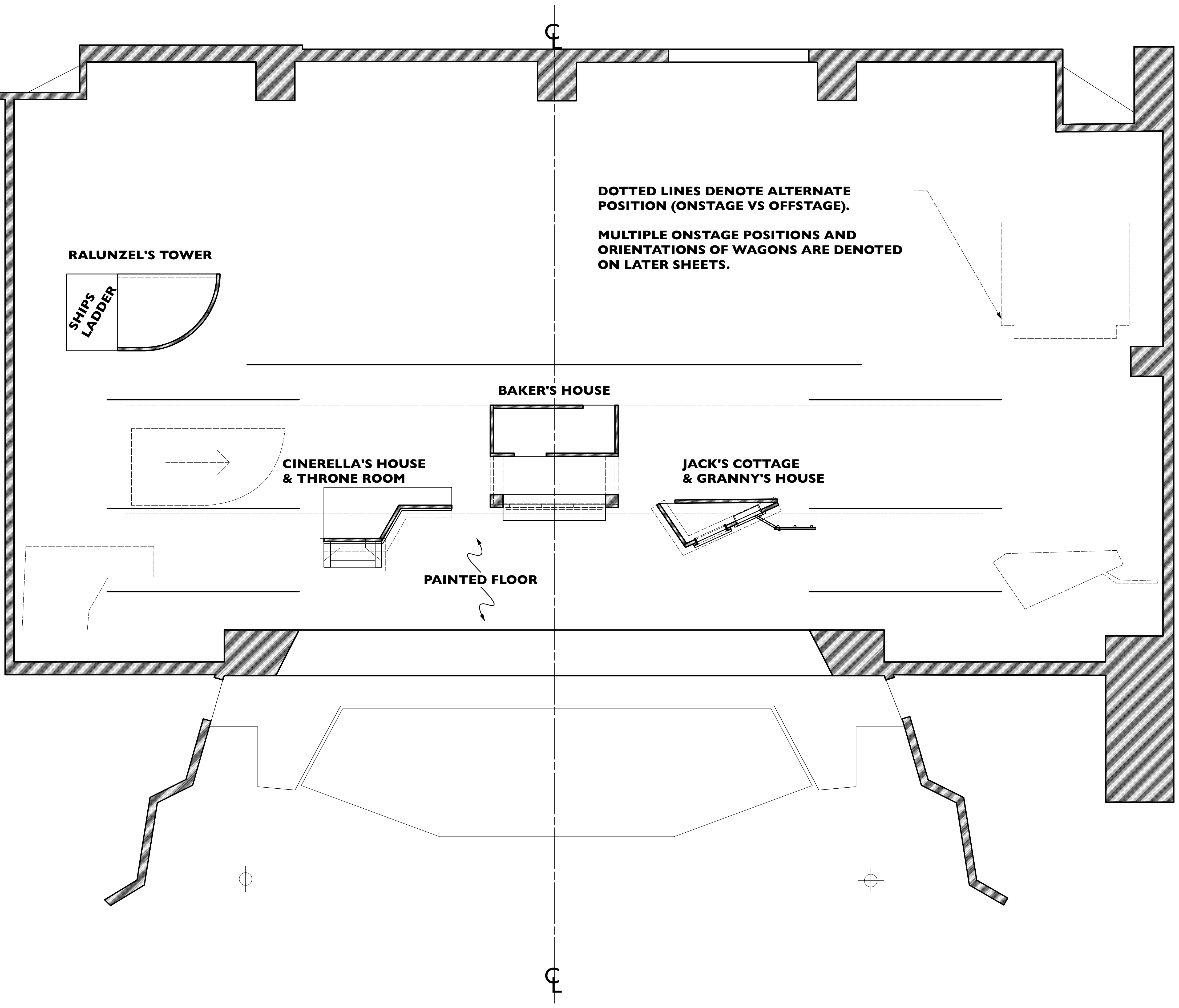


40'-0"	ELECTRIC 7	41
39'-0"	ELECTRIC 6	40
37'-0"		39
36'-0"		38
35'-0"		37
34'-0"		36
33'-0"		35
32'-0"		34
31'-0"		33
30'-0"		32
29'-0"		31
28'-0"		30
27'-0"		29
26'-0"		28
25'-0"		27
24'-0"		26
23'-0"		25
22'-0"		24
21'-0"		23
20'-0"		22
19'-0"	ORCHESTRA CLOUD 1	21
18'-0"		20
17'-0"	FOREST DROP 2	19
16'-0"	EDGE OF FOREST DROP	18
15'-0"		17
14'-0"		16
13'-0"		15
12'-0"	ORCHESTRA CANOPY	
11'-0"		
10'-0"	ORCHESTRA CLOUD 2	
9'-0"	BORDER DROP 2	14
8'-0"	FOREST DROP 1	13
7'-0"		12
6'-0"		11
5'-0"		10
4'-0"	LESS 2	9
3'-0"	BORDER 2	8
2'-0"		7
1'-0"	TRAIL GRAVE	6
0'-0"	ORCHESTRA CLOUD 1	5
0'-0"		4
0'-0"	ELECTRIC 1	3
0'-0"		2
0'-0"	LESS 1	1
0'-0"	BORDER 1	0
0'-0"		0
0'-0"	MANICULTURAN	

LINESET CALLOUT



Designer/Contact Information:
 JACOB YURKOVICH

Drawn By: JACOB YURKOVICH
 Revision Date: 05-06-24

NOTES:

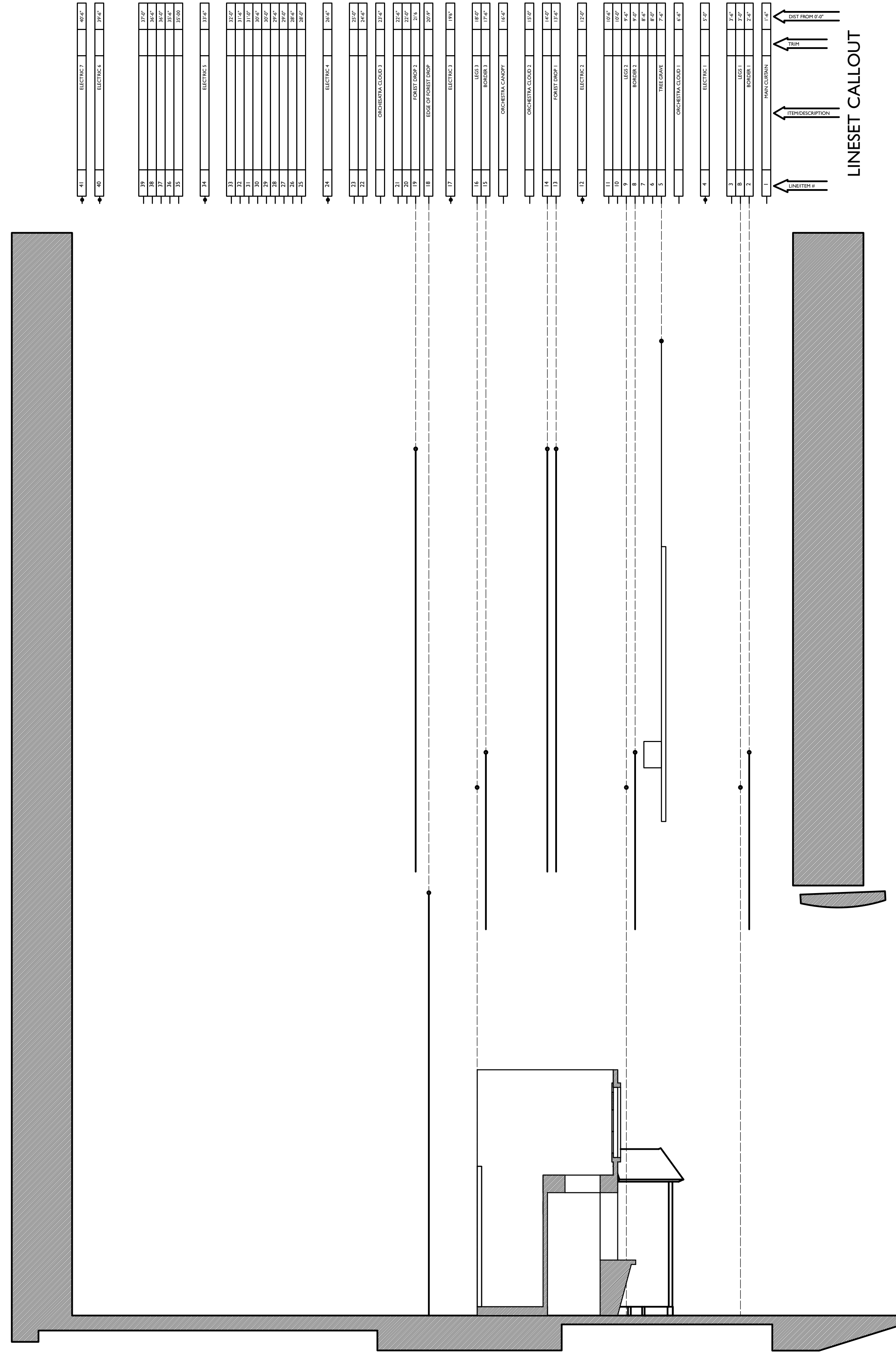
INTO THE WOODS

Project: UGA SCENIC II
 Producer: UGA SCENIC II
 Purpose: GROUND PLAN

Date: 05-06-24

Scale: 1/4"=1'

Sheet: 1. OF 16



NOTES:

Designer/Contact Information:
JACOB YURKOVICH

Project:
INTO THE WOODS

Date:
05-06-24

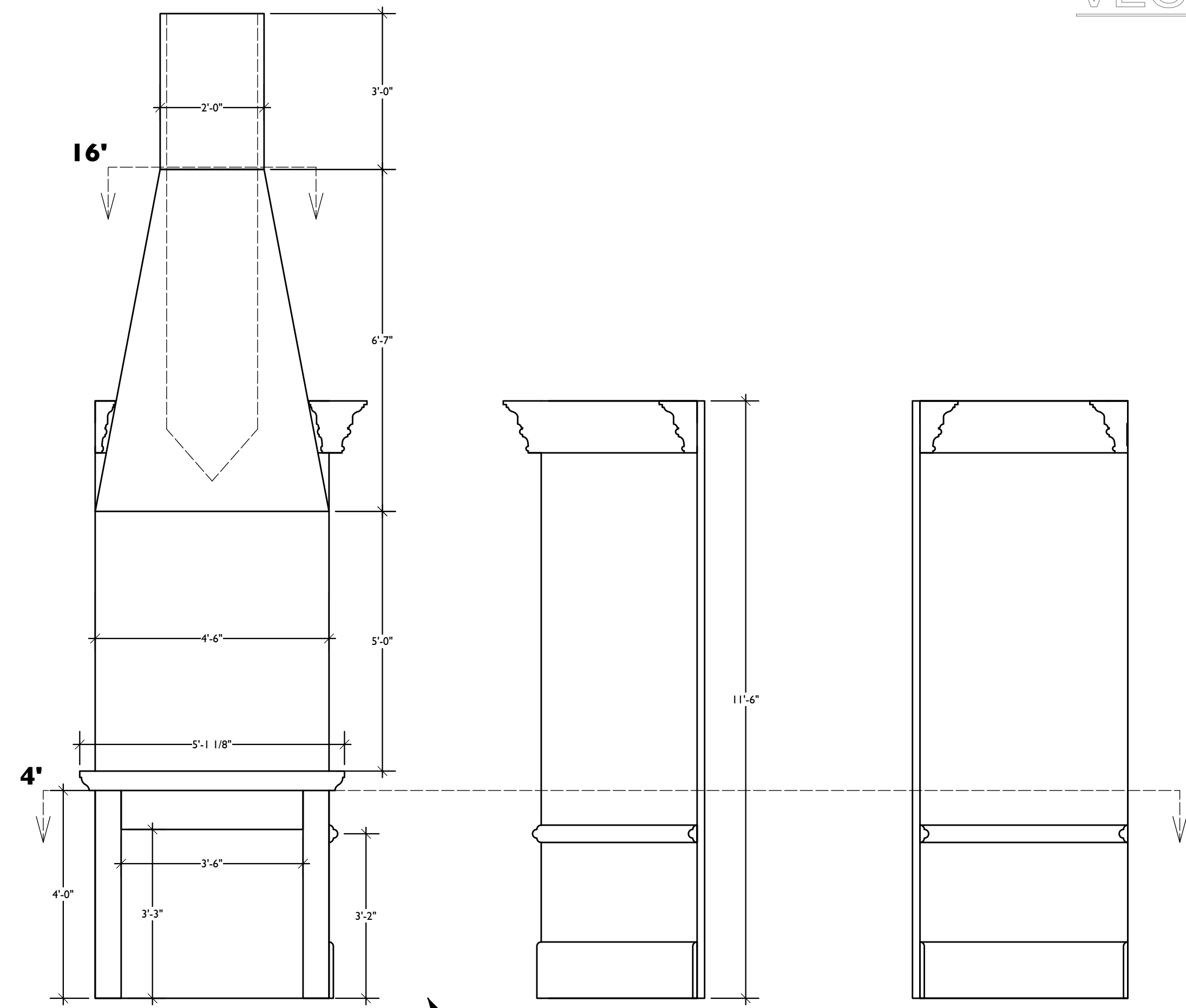
Producer:
UGA SCENIC II

Purpose:
SECTION

Scale:
1/4"=1'

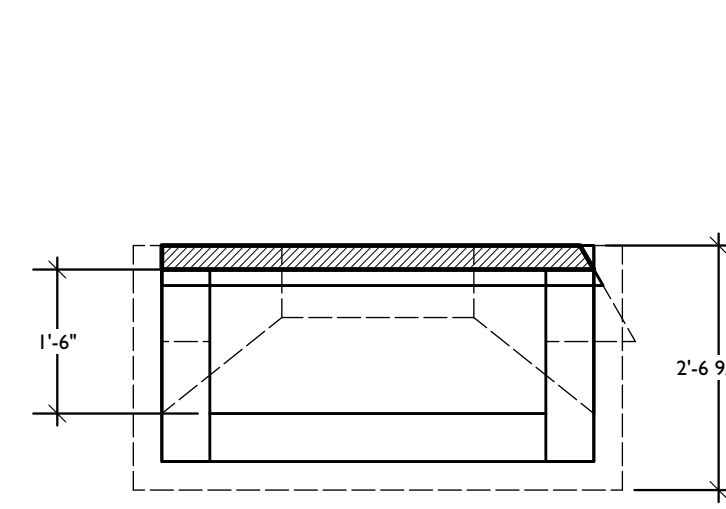
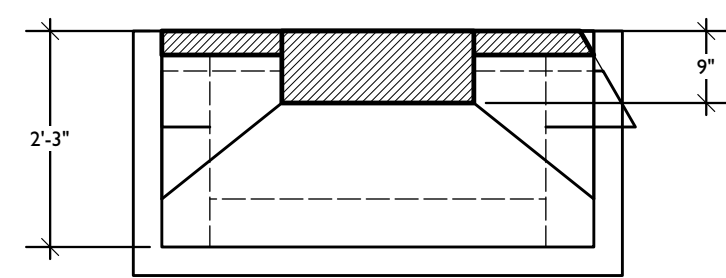
Sheet:
2.
OF
16

Drawn By: JACOB YURKOVICH
Revision Date: 05-06-24

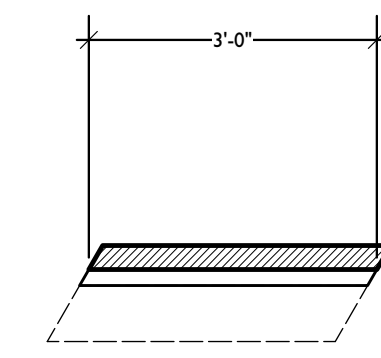


THRONE TO BE PURCHASED

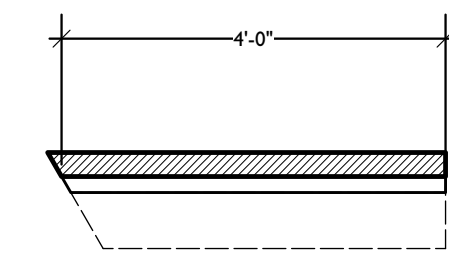
ALL THREE WALLS MUST BE DOUBLE FACED. THE DOWNSTAGE SIDE, AS DRAFTED, SHOULD BE A CLEAN, STUCCOED WALL AND A BRICK FIREPLACE AND HEARTH. THE UPSTAGE SIDE SHOULD BE A WHITE MARBLE WITH DEEP PURPLE VEINS. (SEE MODEL)



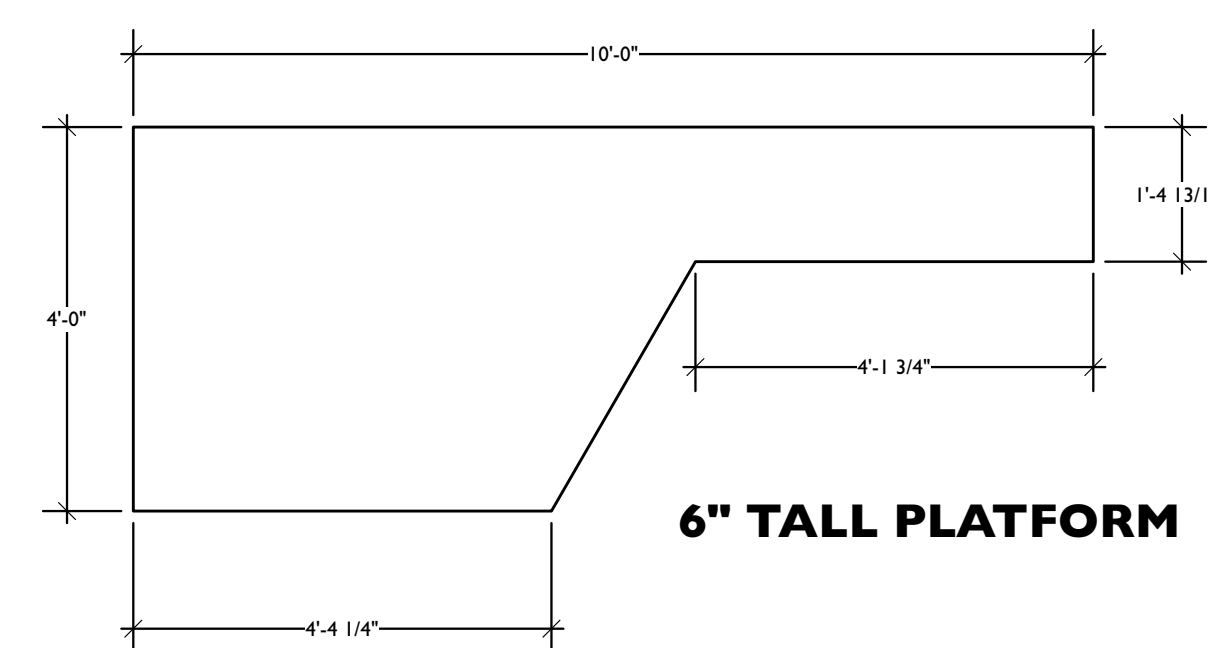
WALL A



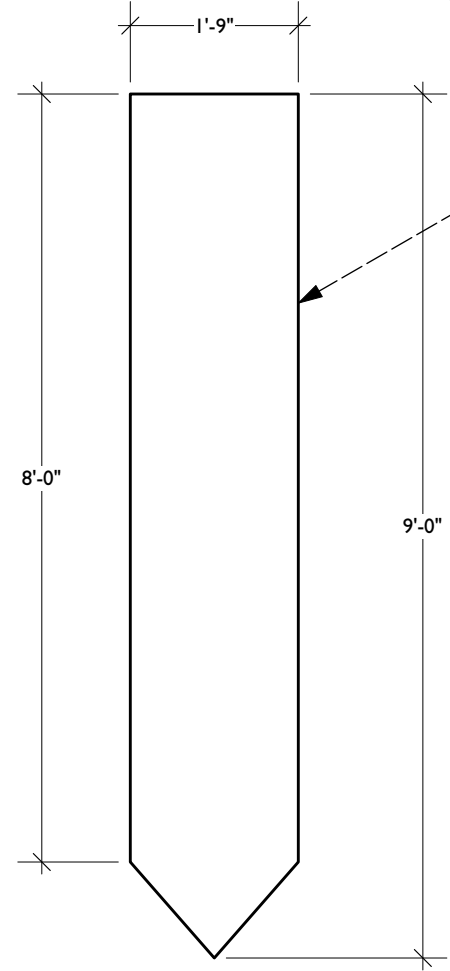
WALL B



WALL C



6" TALL PLATFORM



HANGING BANNER TO BE HUNG ON THE UPSTAGE SIDE OF THE CHIMNEY.

**COPPER BEECH MILLWORK
CB3115**

**TOP IS COPPER BEECH MILLWORK CB3112
BOTTOM IS COPPER BEECH MILLWORK CB3056**

2 MOULDINGS
Scale: 3" = 1'-0"

Designer/Contact Information:
JACOB YURKOVICH

Drawn By: JACOB YURKOVICH
Revision Date: 05-06-24

NOTES:

INTO THE WOODS

Project:

Date:

05-06-24

Scale:

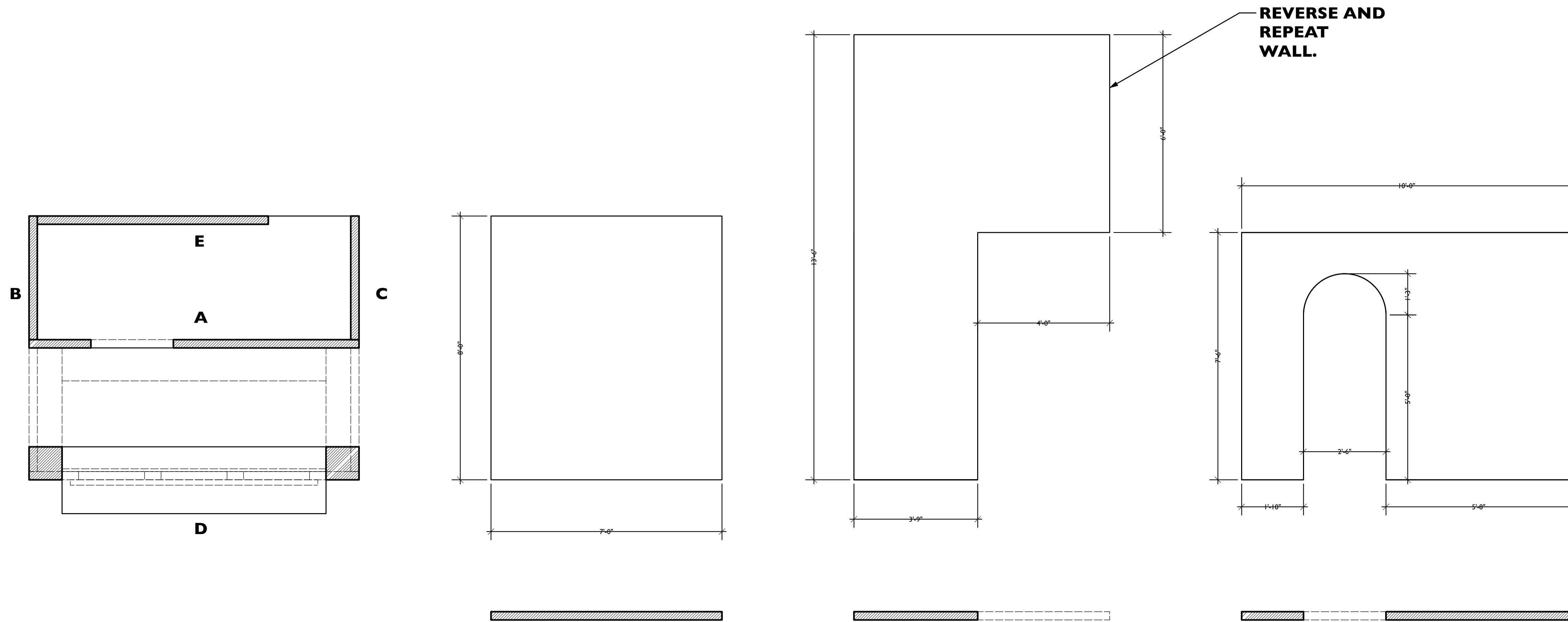
*UNLESS NOTED OTHERWISE
1/2"=1'

Sheet:

3.
OF
16

Producer: UGA SCENIC II

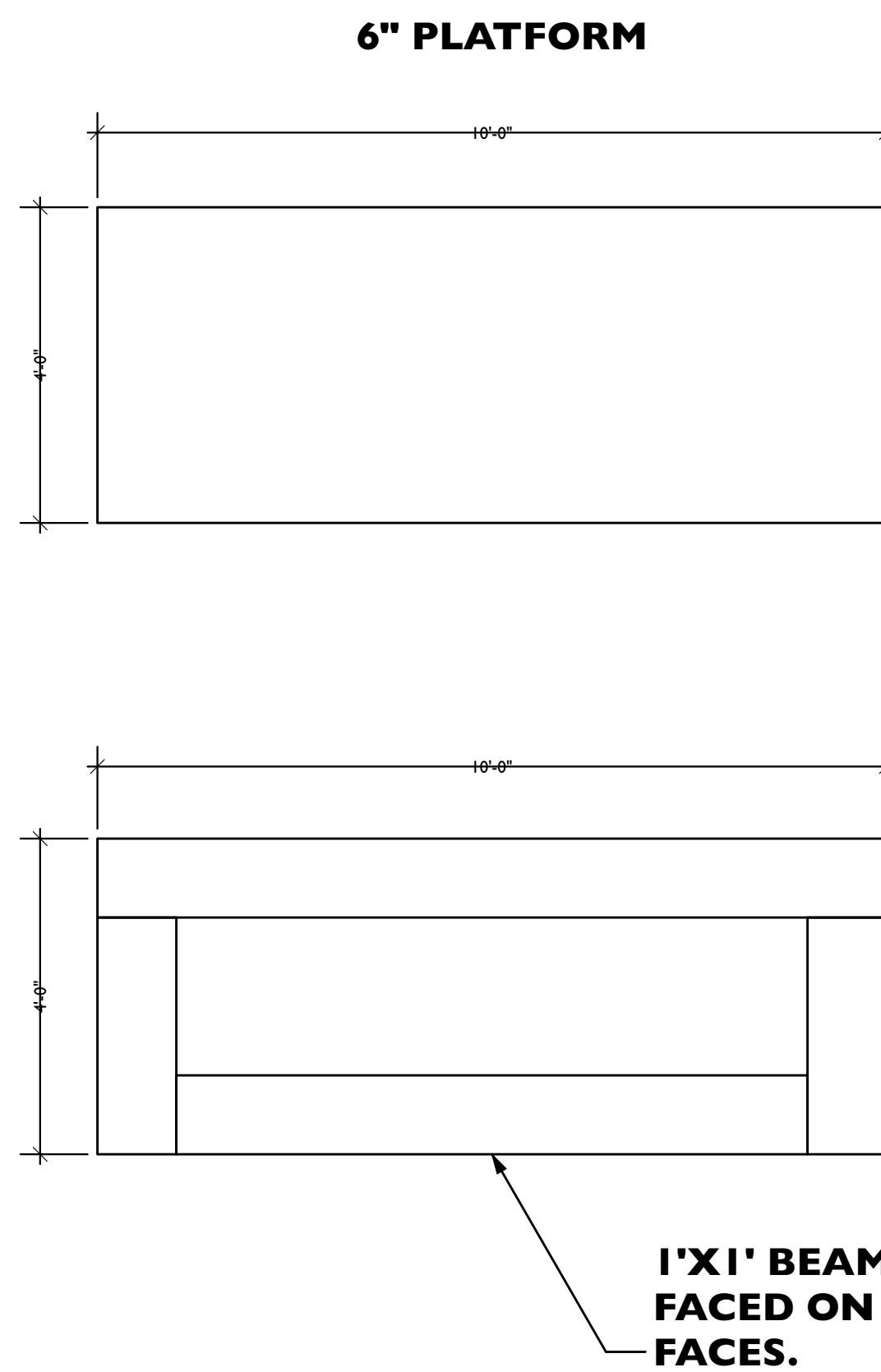
Purpose: CINDERELLA WAGON ELEVATIONS



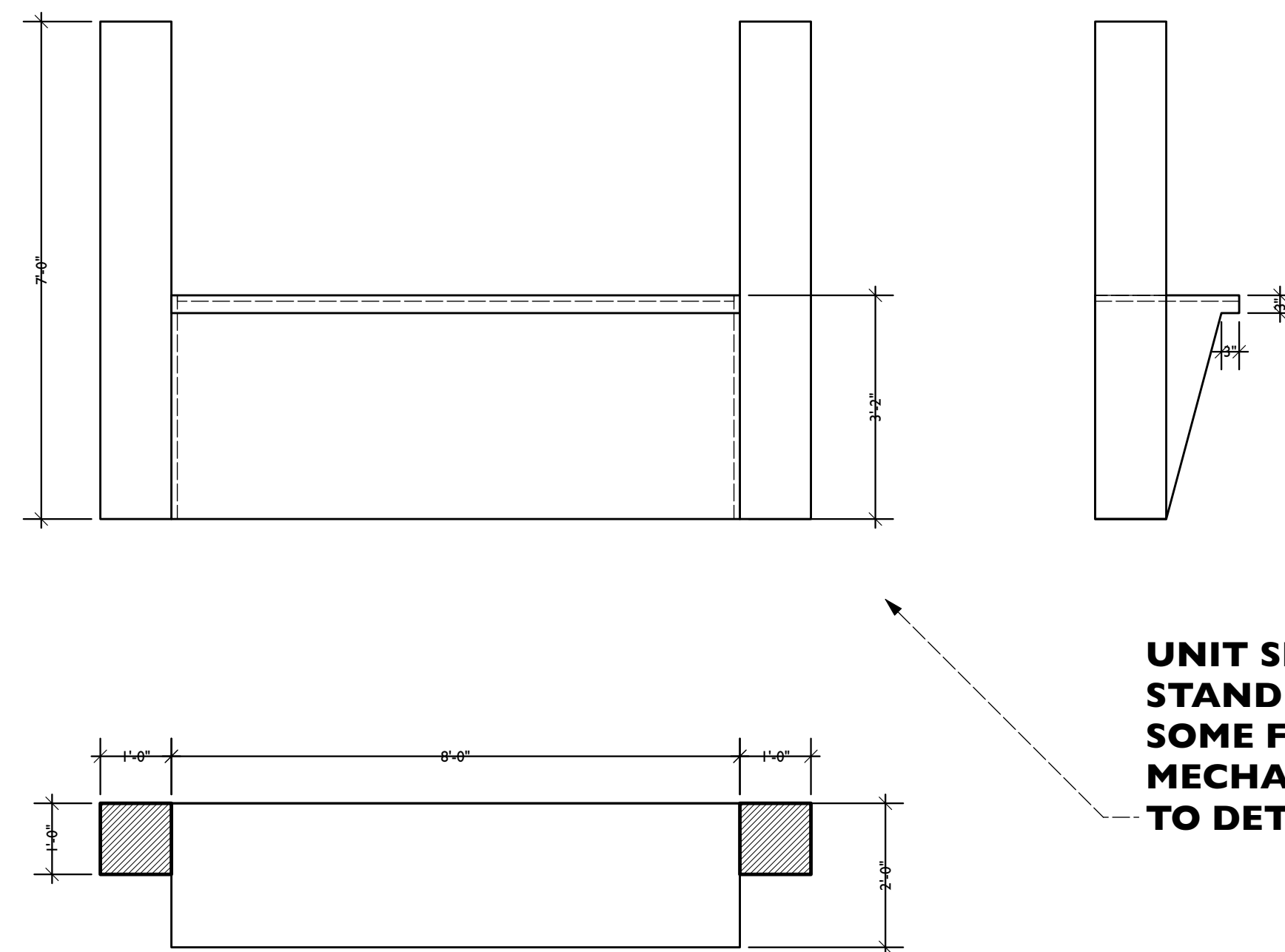
WALL E

WALL B AND C

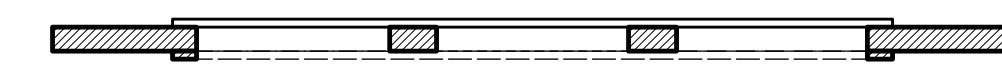
WALL A



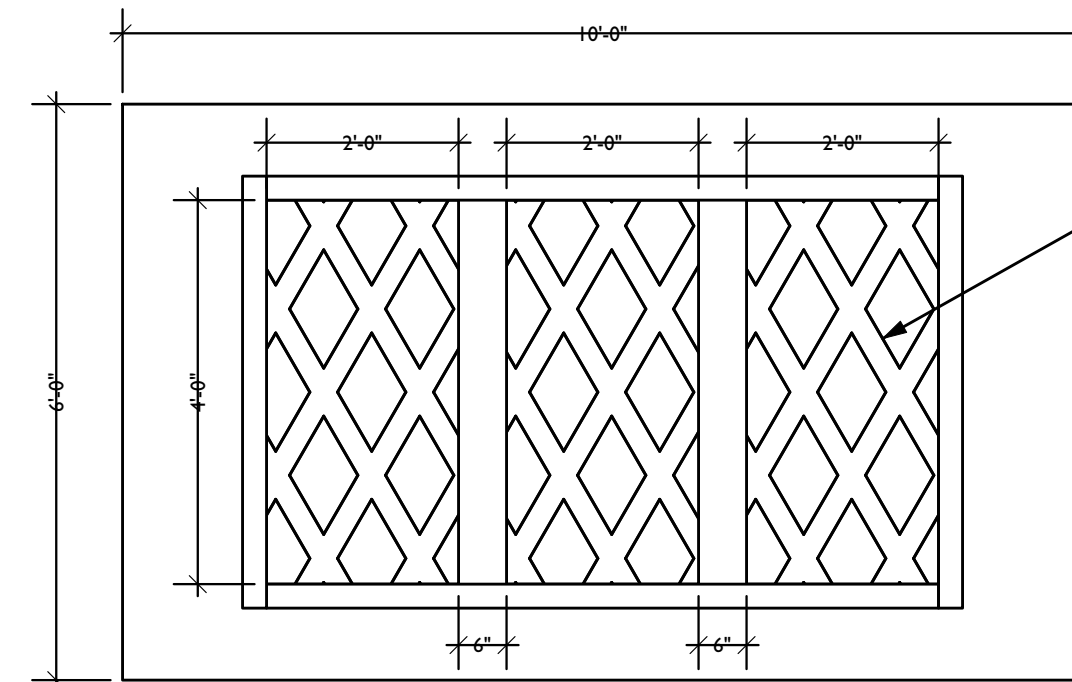
1'X1' BEAMS SHOULD BE FACED ON ALL VISIBLE FACES.



UNIT SHOULD BE ABLE TO STAND ON ITS OWN. ADD SOME FORM OF LOCKING MECHANISM TO ALLOW IT TO DETACH IN ACT 2.



WALL D



LATTICE IS MADE OF 3" BOARDS CROSSING AT A 30 DEGREE ANGLE, REPEATING EVERY FOOT (CAN ALSO BE CNC CUT). THE TRIM OF THE WINDOW IS A 3" BOARD EXTRUDING 1" FROM THE WALL.

Designer/Contact Information:
JACOB YURKOVICH

Drawn By: JACOB YURKOVICH
Revision Date: 05-06-24

NOTES:

INTO THE WOODS

Project:

Date:

05-06-24

Scale:

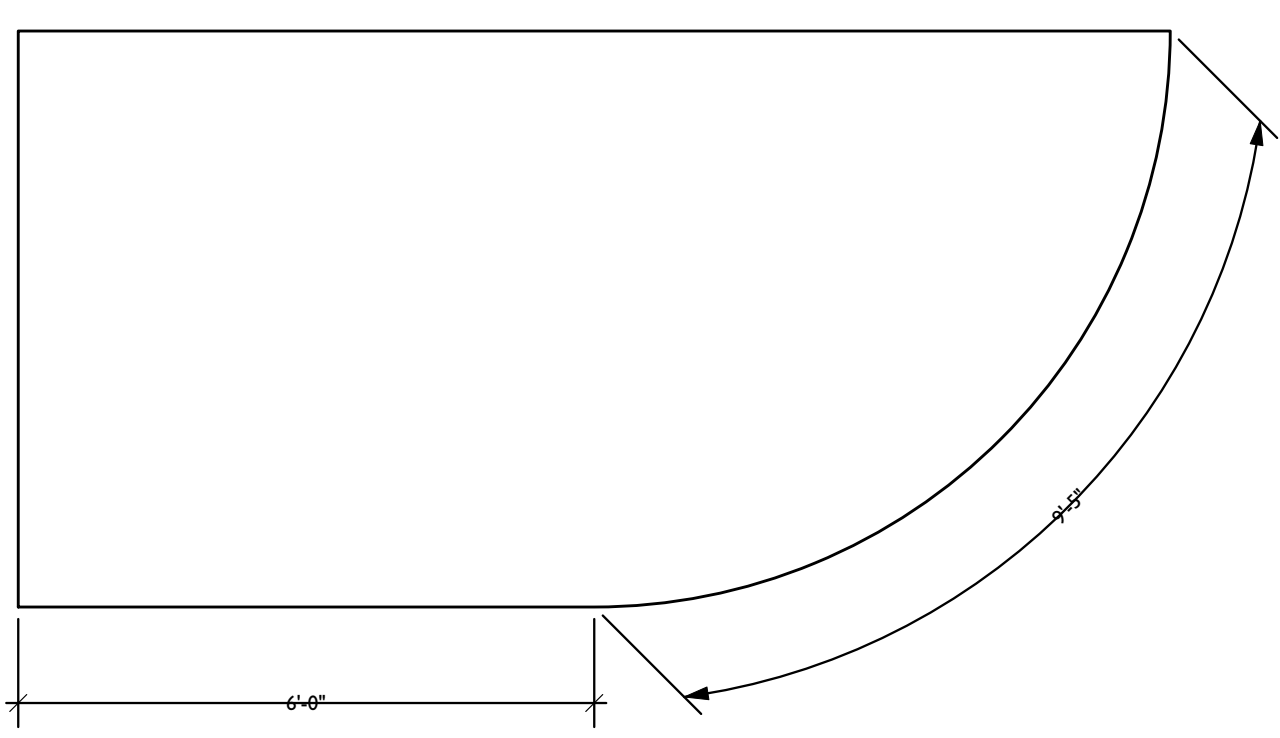
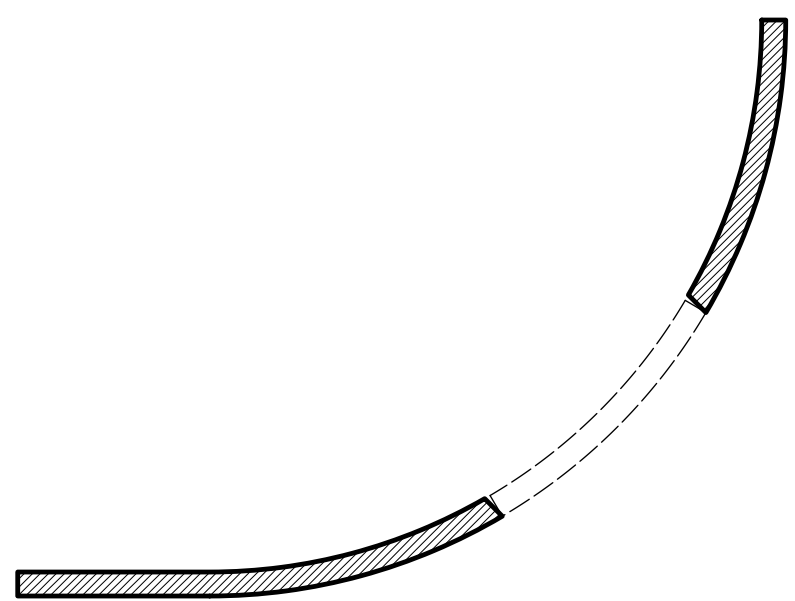
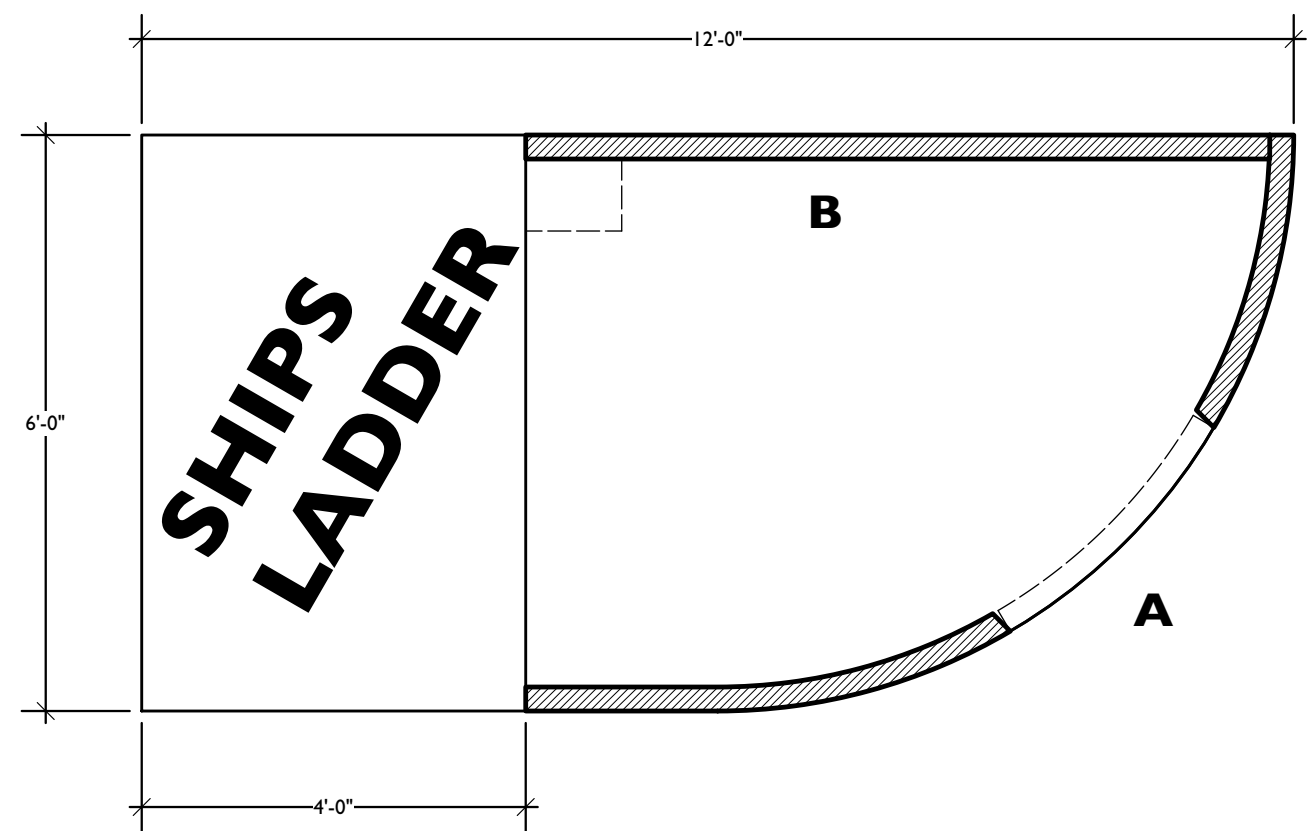
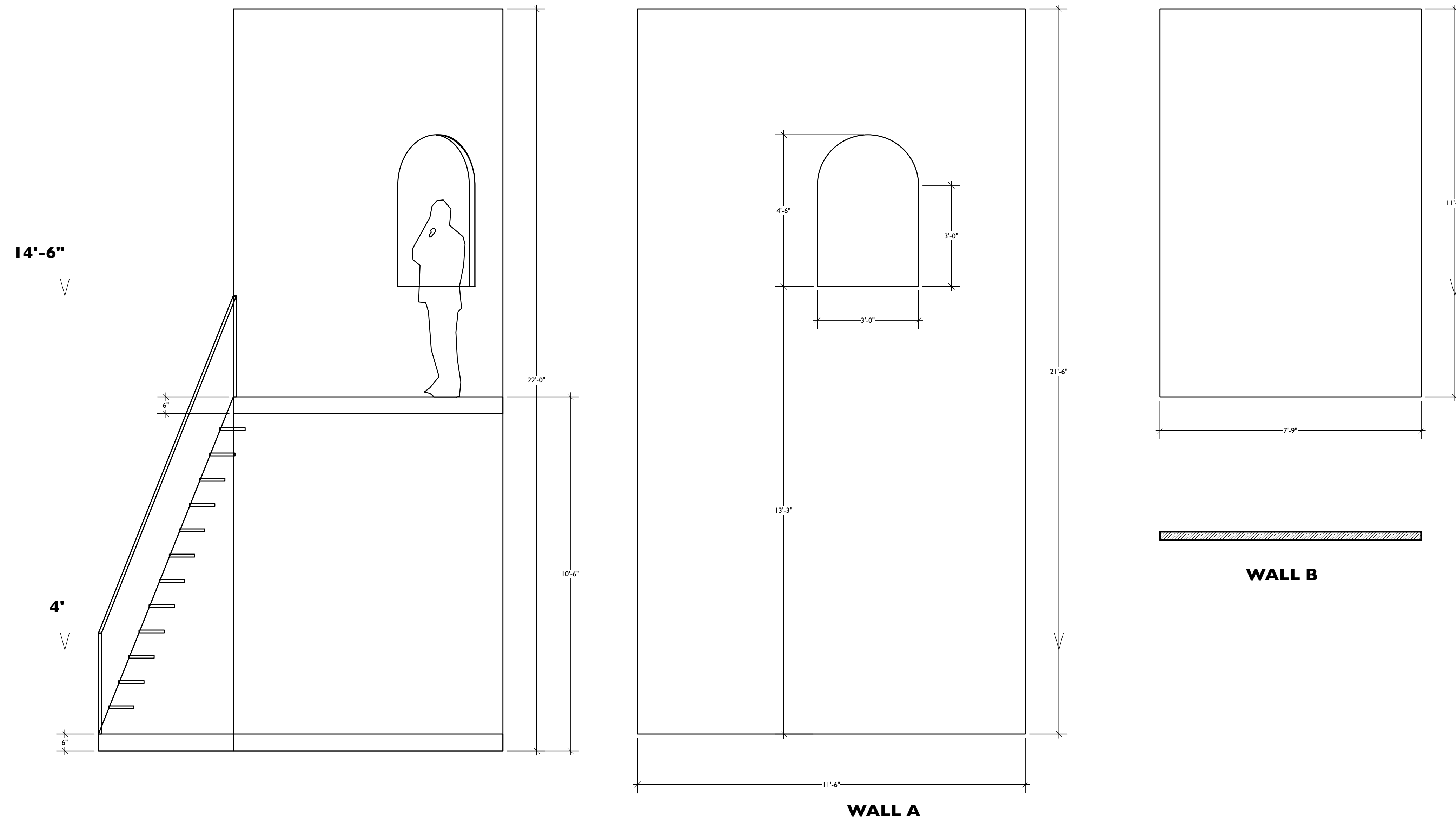
1/2"=1'

Sheet:

4.
OF
16

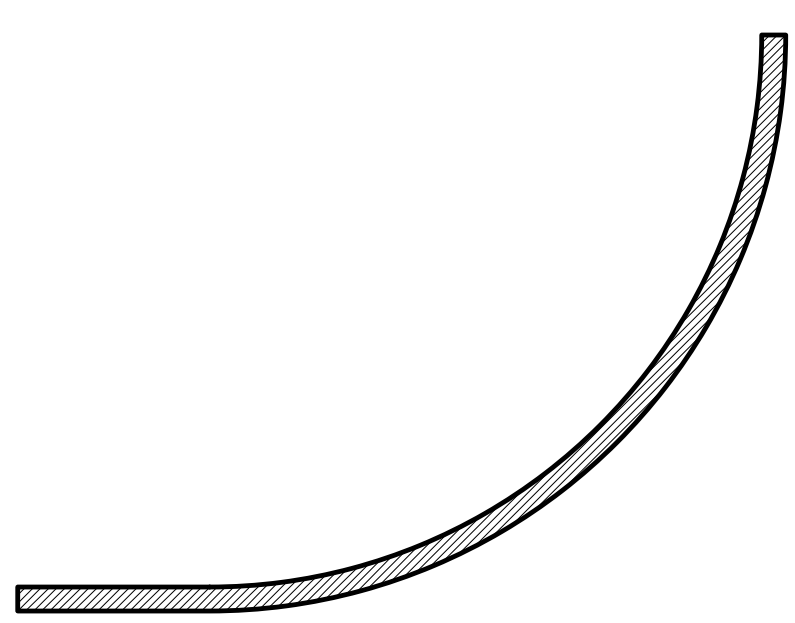
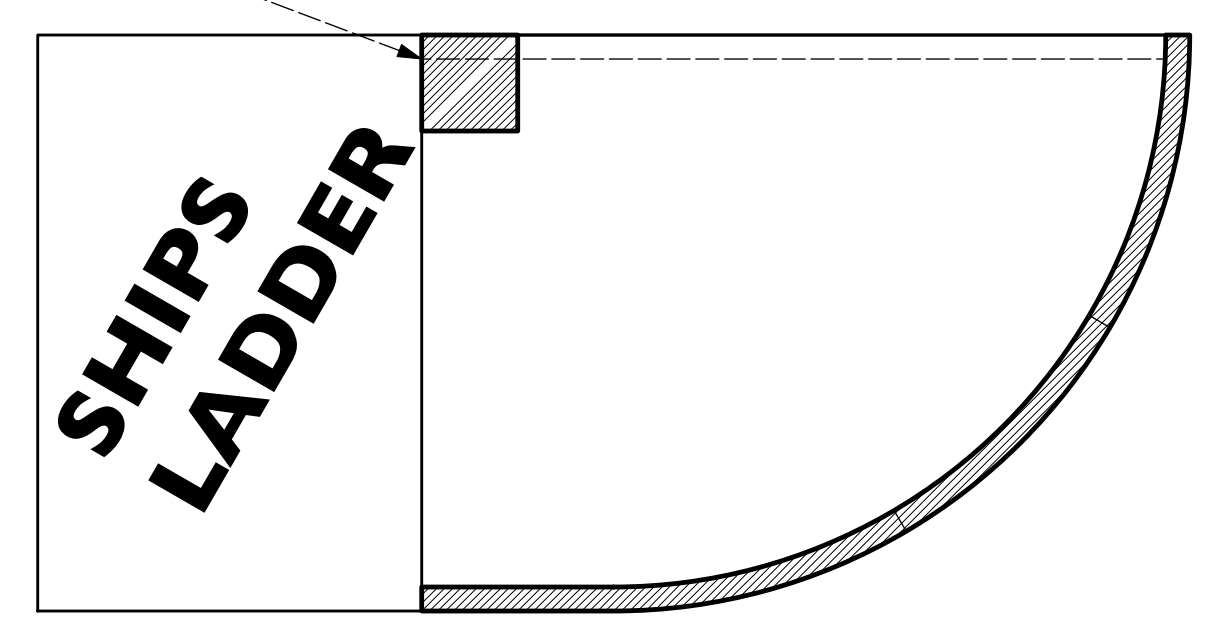
Producer: UGA SCENIC II

Purpose: BAKER WAGON ELEVATIONS



1"X1" BEAM FOR SUPPORT AS A SUGGESTION. CONSULT TECHNICAL DIRECTOR FOR SAFEST METHOD.

SHIP LADDER TO BE PURCHASED.



Designer/Contact Information:
JACOB YURKOVICH

Drawn By: JACOB YURKOVICH
Revision Date: 05-06-24

NOTES:

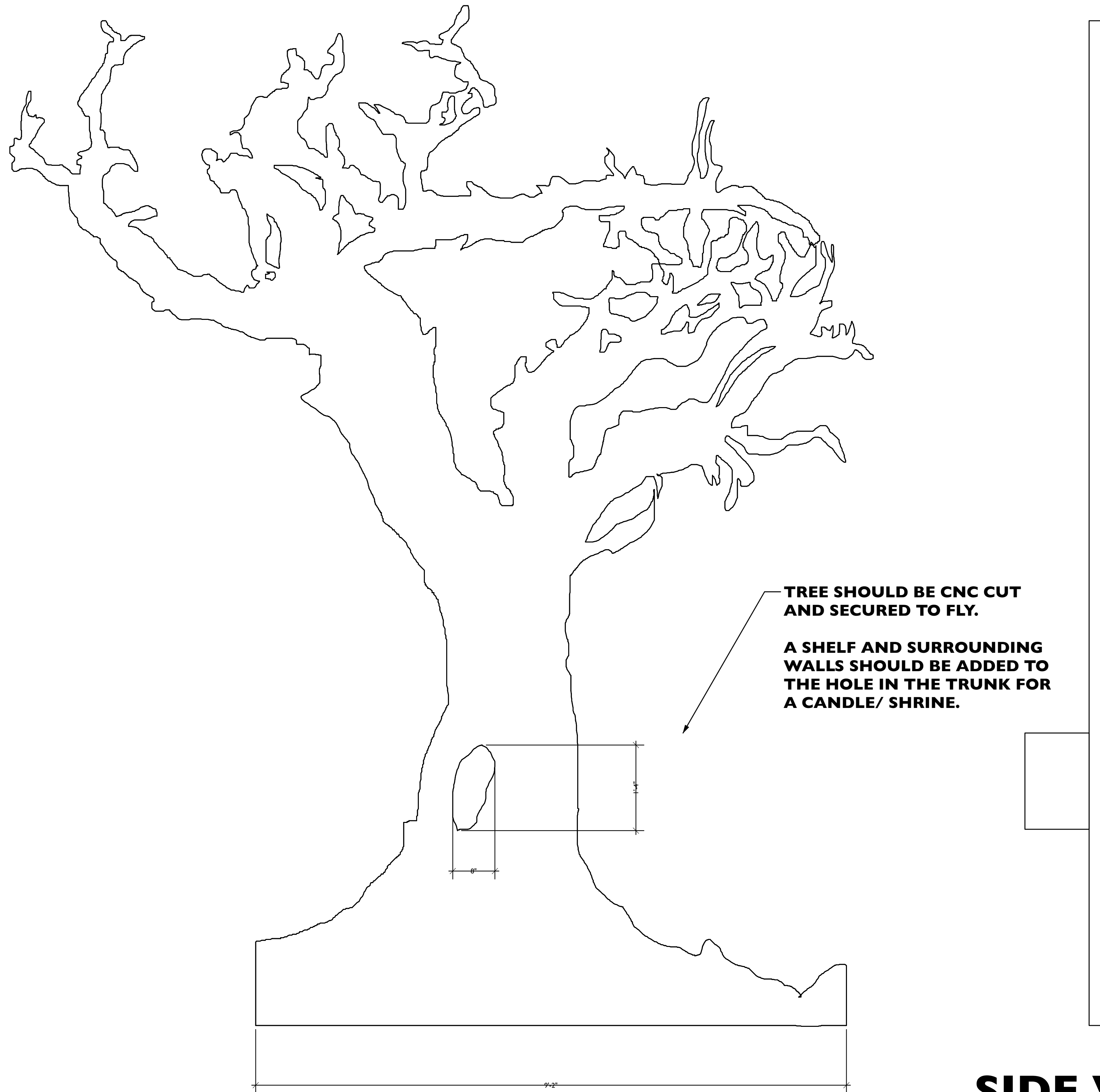
INTO THE WOODS

Project: UGA SCENIC II
Purpose: TOWER ELEVATIONS

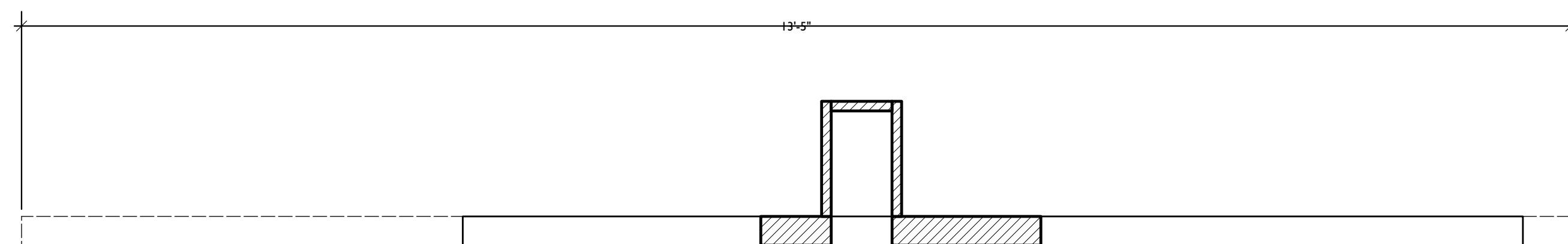
Date: 05-06-24

Scale: 1/4"=1'

Sheet: 6 OF 16



SIDE VIEW



Designer/Contact Information:
JACOB YURKOVICH

Drawn By: JACOB YURKOVICH
Revision Date: 05-06-24

NOTES:

Project:
INTO THE WOODS

Producer:
UGA SCENIC II

Purpose:
TREE ELEVATIONS

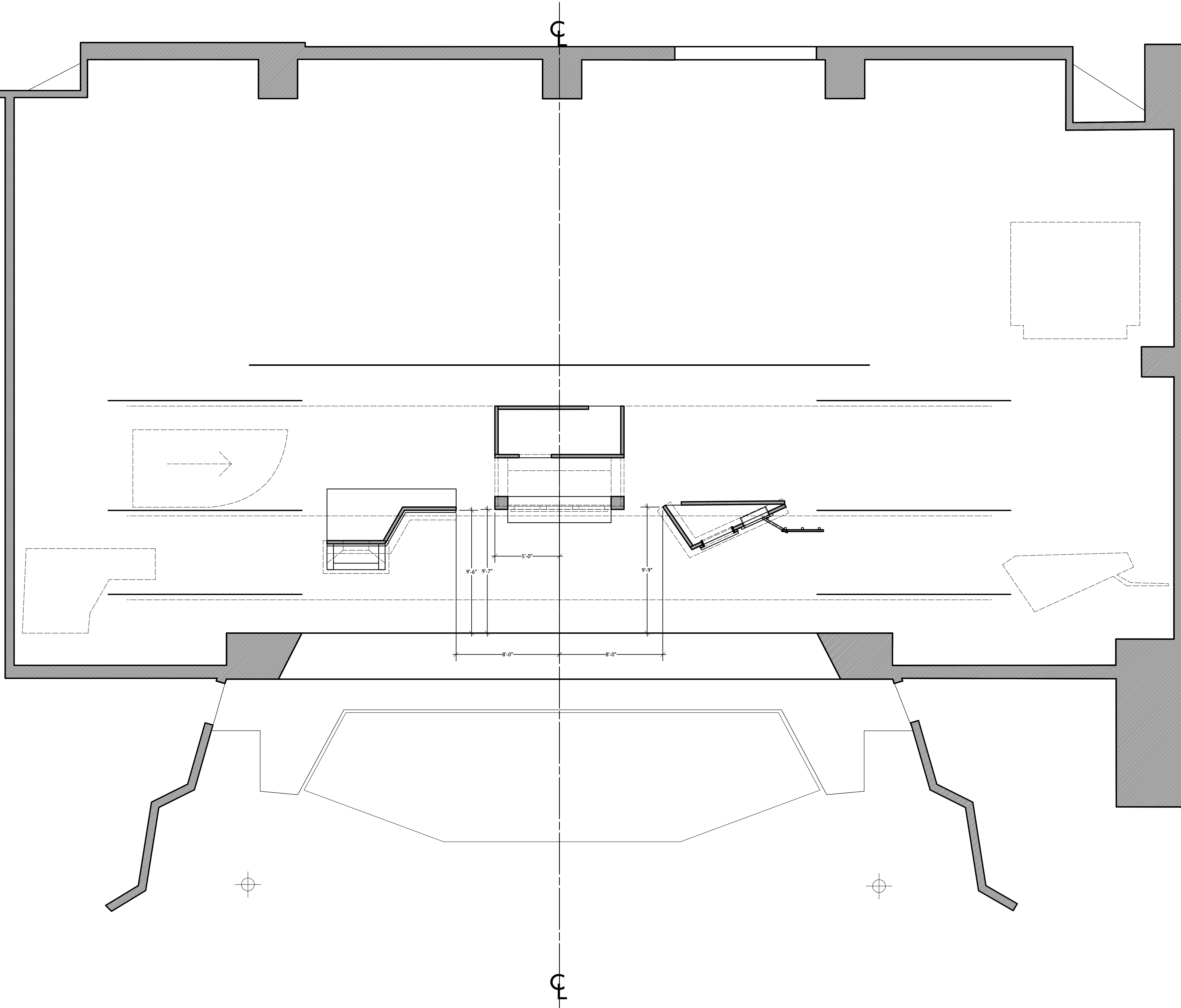
Date:
05-06-24

Scale:
1"=1'

Sheet:
7.
OF
16

40'-0"	ELECTRIC 7	41
39'-0"	ELECTRIC 6	40
37'-0"		39
36'-0"		38
35'-0"		37
34'-0"		36
33'-0"		35
32'-0"	ELECTRIC 5	34
31'-0"		33
30'-0"		32
29'-0"		31
28'-0"		30
27'-0"		29
26'-0"		28
25'-0"		27
24'-0"		26
23'-0"		25
22'-0"	ELECTRIC 4	24
21'-0"		23
20'-0"		22
19'-0"	ORCHESTRA CLOUD 3	19
18'-0"		18
17'-0"	21'-0" FOREST DROF 3	17
16'-0"	21'-0" FOREST DROF 2	16
15'-0"	21'-0" FOREST DROF 1	15
14'-0"	EDGE OF FOREST DROF	14
13'-0"	ELECTRIC 3	13
12'-0"		12
11'-0"	LEGS 3	11
10'-0"	BORDER 3	10
9'-0"	ORCHESTRA CANOPY	9
8'-0"	ORCHESTRA CLOUD 2	8
7'-0"	22'-0" FOREST DROF 3	7
6'-0"	22'-0" FOREST DROF 2	6
5'-0"	22'-0" FOREST DROF 1	5
4'-0"	ELECTRIC 2	4
3'-0"		3
2'-0"	LEGS 2	2
1'-0"	BORDER 2	1
0'-0"	ORCHESTRA CLOUD 1	0
0'-0"	ELECTRIC 1	0
0'-0"	LEGS 1	0
0'-0"	BORDER 1	0
0'-0"	MANICULTURE	0

LINESET CALLOUT



Designer/Contact Information:
JACOB YURKOVICH

Drawn By: JACOB YURKOVICH
Revision Date: 05-06-24

NOTES:

INTO THE WOODS

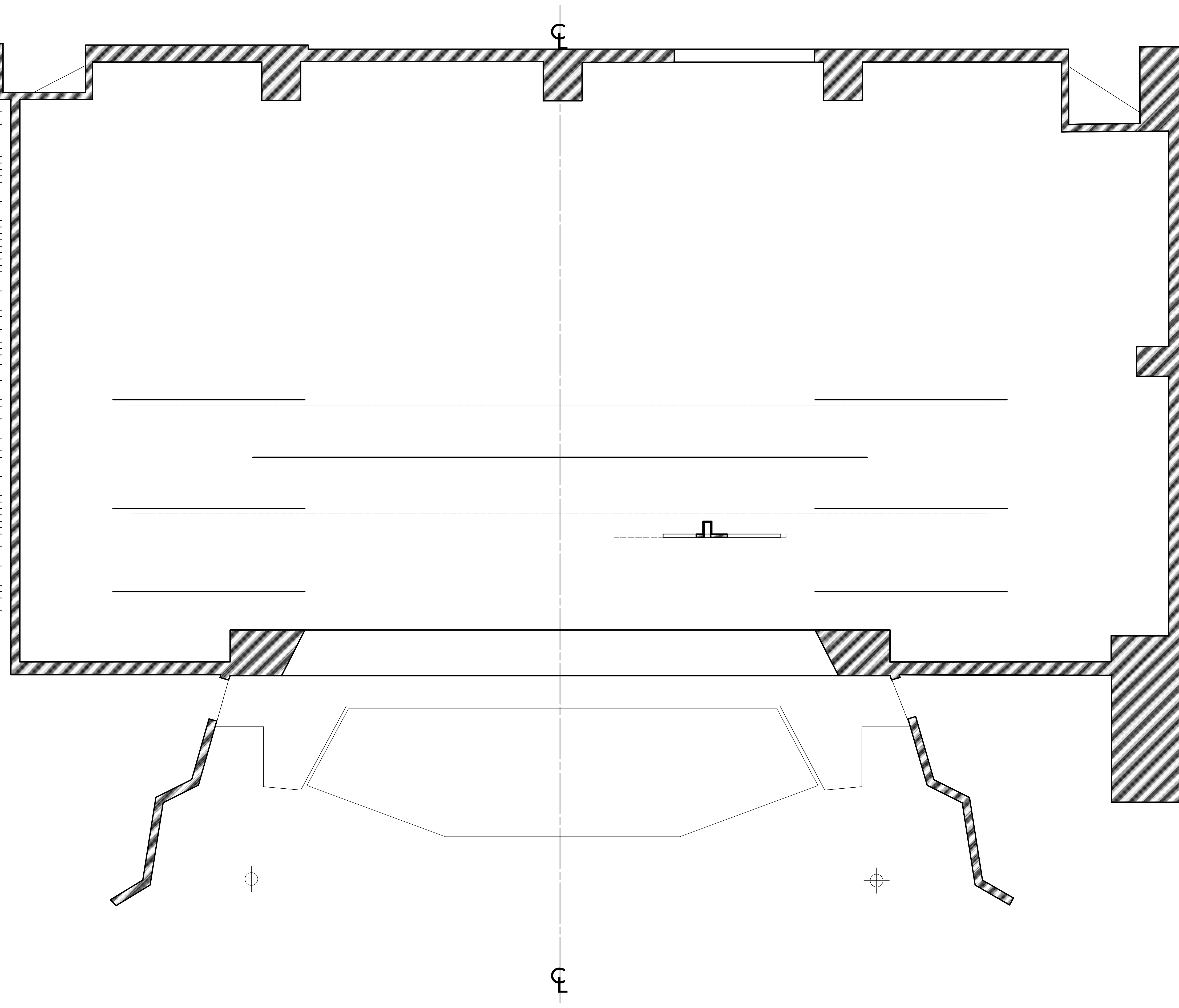
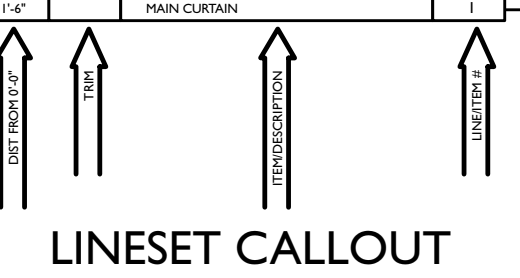
Project: UGA SCENIC II
Purpose: ACT 1. VILLAGE

Date: 05-06-24

Scale: 1/4"=1'

Sheet:
8.
OF
16

40'-0"	ELECTRIC 7	41
39'-0"	ELECTRIC 4	40
37'-0"		39
36'-0"		38
35'-0"		37
35'-00"		36
34'-0"	ELECTRIC 3	34
32'-0"		33
31'-0"		32
30'-0"		31
29'-0"		30
29'-0"		29
28'-0"		28
27'-0"		27
26'-0"		26
25'-0"		25
24'-0"	ELECTRIC 4	24
23'-0"		23
22'-0"		22
22'-0"	ORCHESTRA CLOUD 3	
21'-0"		21
20'-0"		20
19'-0"	FOREST DROP 3	19
18'-0"	EDGE OF FOREST DROP	18
17'-0"	ELECTRIC 3	17
16'-0"	LEGS 3	16
15'-0"	BORDR 3	15
14'-0"	ORCHESTRA CANOPY	
13'-0"	ORCHESTRA CLOUD 2	
12'-0"	FOREST DROP 3	12
11'-0"	FOREST DROP 1	11
10'-0"	ELECTRIC 2	10
9'-0"		9
8'-0"	LEGS 2	8
7'-0"	BORDR 2	7
6'-0"		6
5'-0"	TREE GRAVE	5
4'-0"	ORCHESTRA CLOUD 1	
3'-0"	ELECTRIC 1	3
2'-0"		2
1'-0"	LEGS 1	1
0'-0"	BORDR 1	0
0'-0"	MAIN CURBWAY	0



Designer/Contact Information:
JACOB YURKOVICH

Drawn By: JACOB YURKOVICH
Revision Date: 05-06-24

NOTES:

INTO THE WOODS

Project: UGA SCENIC II
Purpose: TREE GRAVE

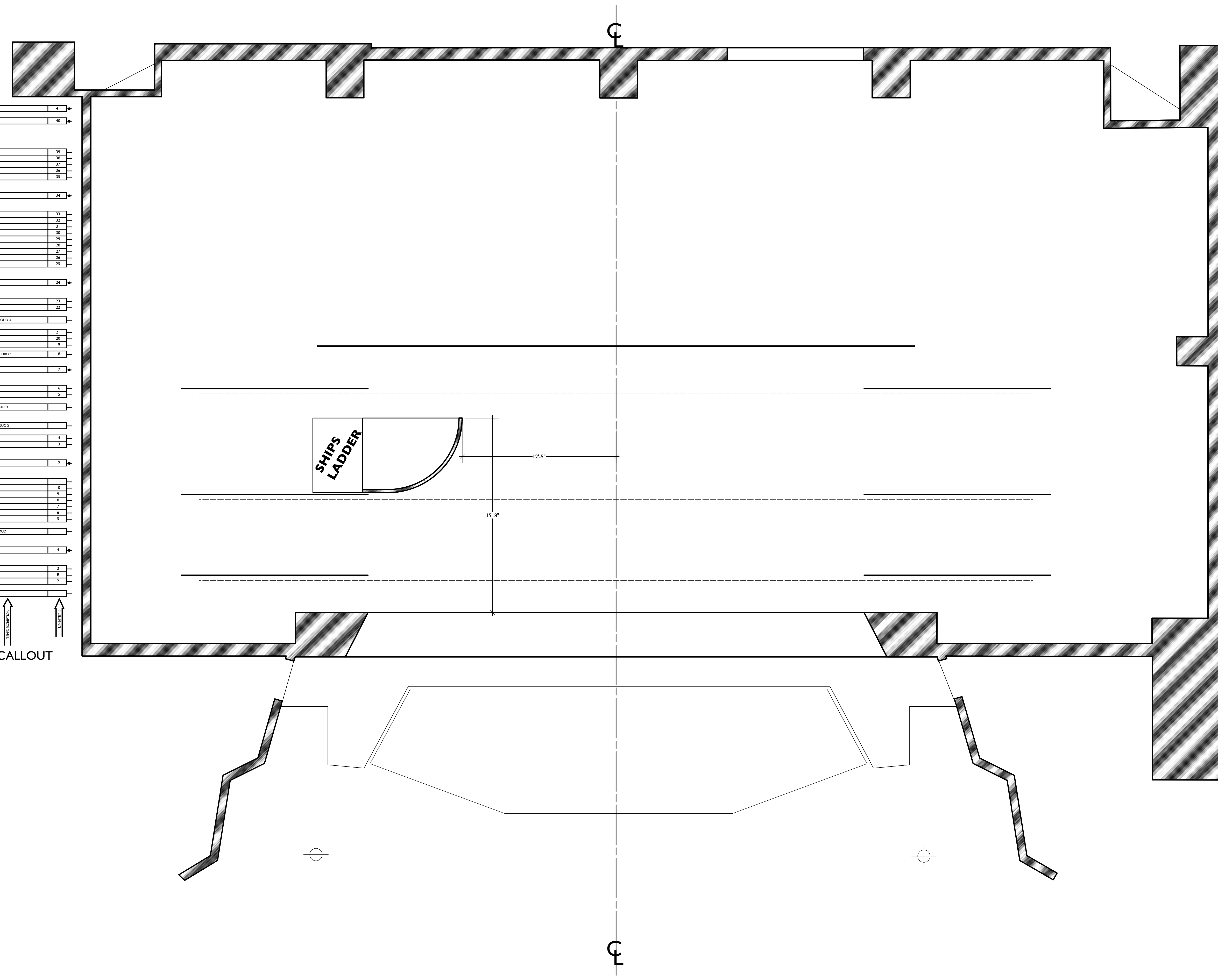
Date: 05-06-24

Scale: 1/4"=1'

Sheet:
9.
OF
16

41'-0"	ELECTRIC 7	41
39'-0"	ELECTRIC 6	40
37'-0"		39
36'-0"		38
35'-0"		37
35'-00"		35
33'-0"	ELECTRIC 5	34
32'-0"		33
31'-0"		32
30'-0"		31
30'-0"		30
29'-0"		29
28'-0"		28
28'-0"		27
28'-0"		26
28'-0"		25
26'-0"	ELECTRIC 4	24
25'-0"		23
24'-0"		22
22'-0"	ORCHESTRA CLOUD 3	21
22'-0"		20
21'-0"	FOREST DROP 2	19
20'-0"	EDGE OF FOREST DROP	18
19'-0"	ELECTRIC 3	17
18'-0"	LEGS 3	16
17'-0"	BORDER 3	15
16'-0"	ORCHESTRA CANOPY	
15'-0"	ORCHESTRA CLOUD 2	
14'-0"	FOREST DROP 3	14
13'-0"	FOREST DROP 1	13
12'-0"	ELECTRIC 2	12
10'-0"		11
10'-0"		10
9'-0"	LEGS 2	9
8'-0"	BORDER 2	8
8'-0"		7
8'-0"		6
7'-0"	TRAIL GRASS	5
6'-0"	ORCHESTRA CLOUD 1	
5'-0"	ELECTRIC 1	4
3'-0"	LEGS 1	3
2'-0"	BORDER 1	2
1'-0"	MAIN CURTAIN	1

LINESET CALLOUT



Designer/Contact Information:
JACOB YURKOVICH

Drawn By: JACOB YURKOVICH
Revision Date: 05-06-24

NOTES:

INTO THE WOODS

Project: UGA SCENIC II
Producer: UGA SCENIC II
Purpose: RAPUNZEL'S TOWER

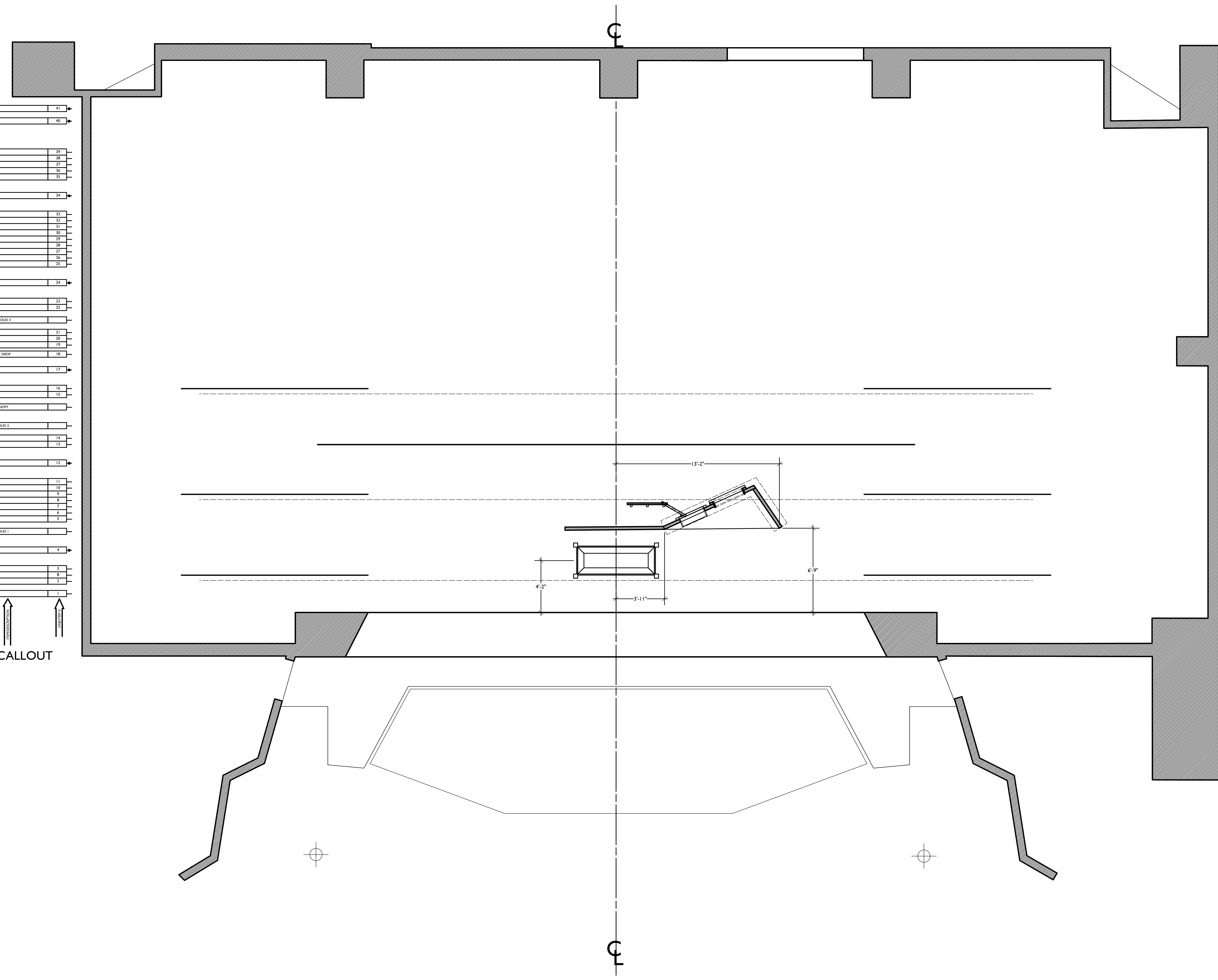
Date: 05-06-24

Scale: 1/4"=1'

Sheet: 10. OF 16

41'-0"	ELECTRIC 7	41
39'-0"	ELECTRIC 6	40
37'-0"		39
36'-0"		38
35'-0"		37
35'-00"		36
35'-00"		35
33'-0"	ELECTRIC 5	34
32'-0"		33
31'-0"		32
30'-0"		31
30'-0"		30
29'-0"		29
29'-0"		28
29'-0"		27
28'-0"		26
28'-0"		25
26'-0"	ELECTRIC 4	24
23'-0"		23
24'-0"		22
22'-0"	ORCHESTRA CLOUD 3	21
22'-0"		20
21'-0"	FOREST DROP 2	19
20'-0"	EDGE OF FOREST DROP	18
19'-0"	ELECTRIC 3	17
18'-0"	LEGS 3	16
17'-0"	BORDER 3	15
16'-0"	ORCHESTRA CANOPY	
15'-0"	ORCHESTRA CLOUD 2	
14'-0"	FOREST DROP 3	14
13'-0"	FOREST DROP 1	13
12'-0"	ELECTRIC 2	12
10'-0"		11
10'-0"		10
9'-0"	LEGS 2	9
8'-0"	BORDER 2	8
8'-0"		7
8'-0"		6
7'-0"	TREE GRASS	5
6'-0"	ORCHESTRA CLOUD 1	
5'-0"	ELECTRIC 1	4
3'-0"	LEGS 1	3
2'-0"	BORDER 1	2
1'-0"	MAIN CURTAIN	1

LINESSET CALLOUT



Designer/Contact Information:
JACOB YURKOVICH

Drawn By: JACOB YURKOVICH
Revision Date: 05-06-24

NOTES:

INTO THE WOODS

Project: UGA SCENIC II
Purpose: GRANNY'S COTTAGE

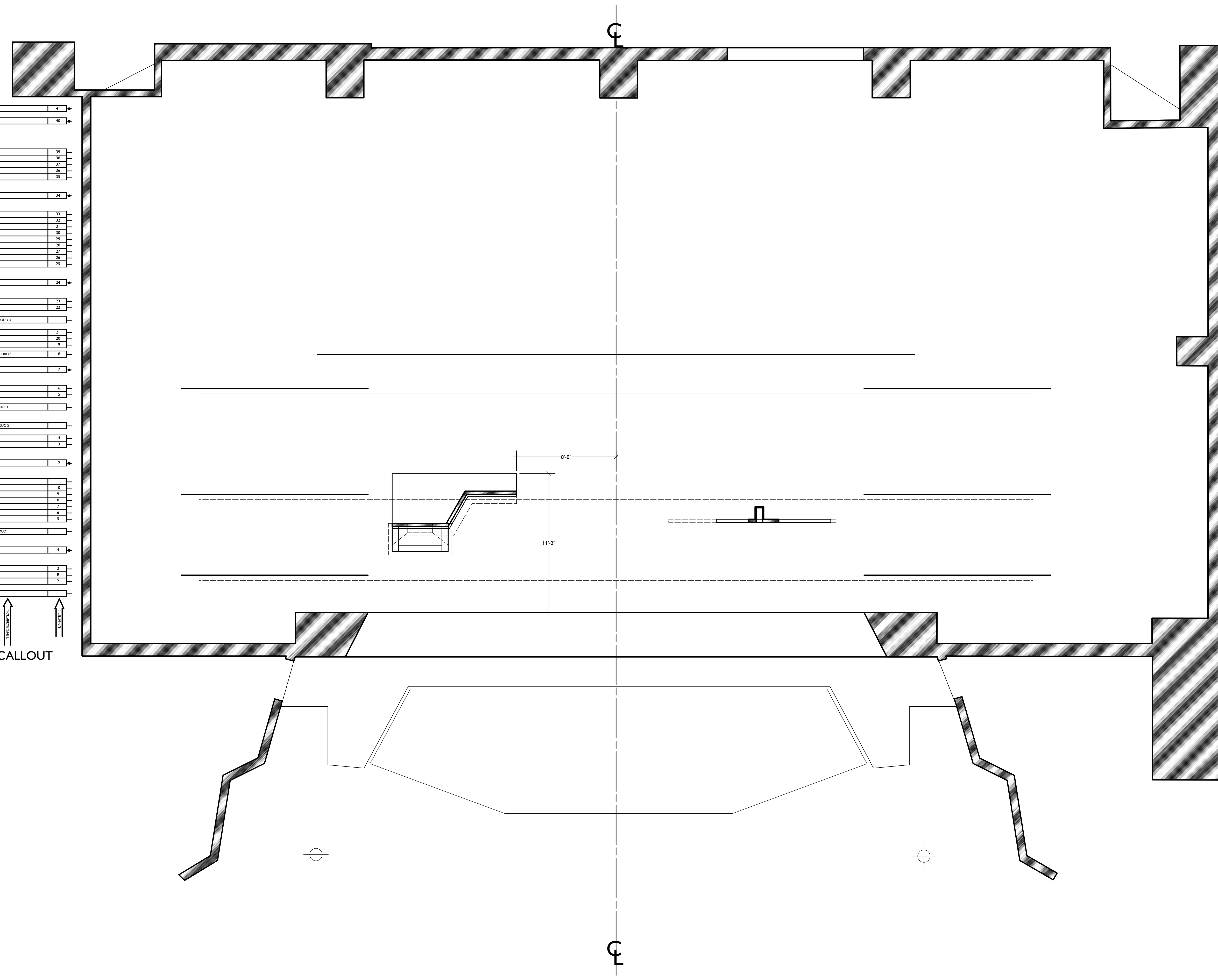
Date: 05-06-24

Scale: 1/4"=1'

Sheet: 11. OF 16

41'-0"	ELECTRIC 7	41
39'-0"	ELECTRIC 6	40
37'-0"		39
36'-0"		38
35'-0"		37
35'-00		36
35'-00		35
33'-0"	ELECTRIC 5	34
32'-0"		33
31'-0"		32
30'-0"		31
30'-0"		30
29'-0"		29
29'-0"		28
29'-0"		27
28'-0"		26
28'-0"		25
26'-0"	ELECTRIC 4	24
25'-0"		23
24'-0"		22
22'-0"	ORCHESTRA CLOUD 3	21
22'-0"		20
21'-0"	FOREST DROP 2	19
20'-0"	EDGE OF FOREST DROP	18
19'-0"	ELECTRIC 3	17
18'-0"	LEGS 3	16
17'-0"	BORDER 3	15
16'-0"	ORCHESTRA CANOPY	14
15'-0"	ORCHESTRA CLOUD 2	14
14'-0"	FOREST DROP 3	13
13'-0"	FOREST DROP 1	13
12'-0"	ELECTRIC 2	12
10'-0"		11
10'-0"		10
9'-0"	LEGS 2	9
8'-0"	BORDER 2	8
8'-0"		7
8'-0"		6
7'-0"	TRAIL GRASS	5
6'-0"	ORCHESTRA CLOUD 1	4
5'-0"	ELECTRIC 1	4
3'-0"	LEGS 1	3
2'-0"	BORDER 1	2
1'-0"	MAIN CURTAIN	1

LINESSET CALLOUT



Designer/Contact Information:
JACOB YURKOVICH

Drawn By: JACOB YURKOVICH
Revision Date: 05-06-24

NOTES:

Project: INTO THE WOODS

Producer: UGA SCENIC II

Purpose: ACT 1. FINALE

Date:

05-06-24

Scale:

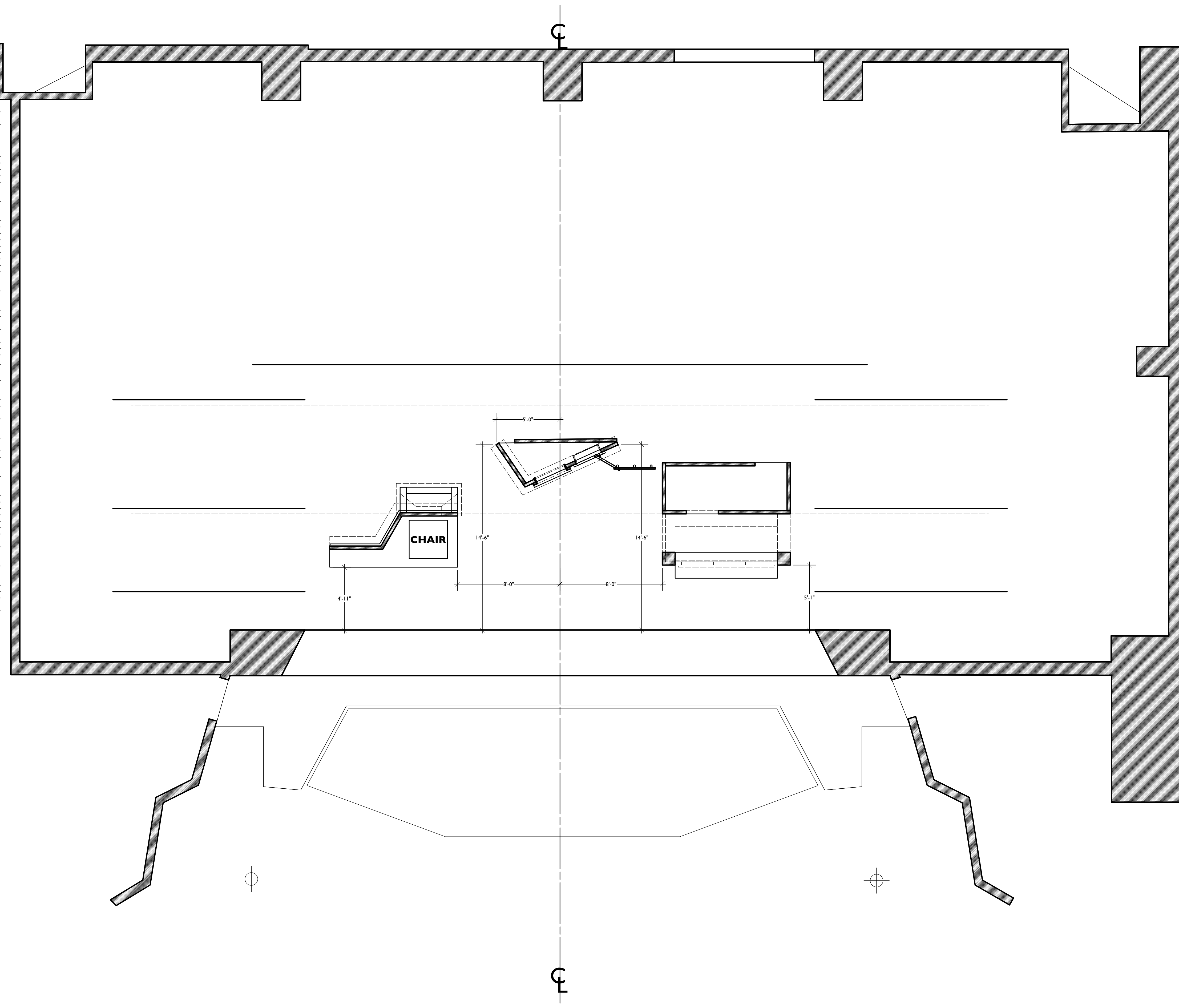
1/4"=1'

Sheet:

12.
OF
16

41'-0"	ELECTRIC 7	41
39'-0"	ELECTRIC 6	40
37'-0"		39
36'-0"		38
35'-0"		37
35'-00		35
33'-0"	ELECTRIC 5	34
32'-0"		33
31'-0"		32
30'-0"		31
30'-0"		30
29'-0"		29
28'-0"		28
28'-0"		27
28'-0"		26
28'-0"		25
26'-0"	ELECTRIC 4	24
25'-0"		23
24'-0"		22
22'-0"	ORCHESTRA CLOUD 3	21
22'-0"		20
21'-0"	FOREST DROP 2	19
20'-0"	EDGE OF FOREST DROP	18
19'-0"	ELECTRIC 3	17
18'-0"	LEGS 3	16
17'-0"	BORDER 3	15
16'-0"	ORCHESTRA CANOPY	
15'-0"	ORCHESTRA CLOUD 2	
14'-0"	FOREST DROP 3	14
13'-0"	FOREST DROP 1	13
12'-0"	ELECTRIC 2	12
10'-0"		11
10'-0"		10
9'-0"	LEGS 2	9
8'-0"	BORDER 2	8
8'-0"		7
8'-0"		6
7'-0"	TREE GRASS	5
6'-0"	ORCHESTRA CLOUD 1	
5'-0"	ELECTRIC 1	4
3'-0"		3
2'-0"	LEGS 1	2
2'-0"	BORDER 1	1
1'-0"	MAIN CURTAIN	1

LINESSET CALLOUT



Designer/Contact Information:
JACOB YURKOVICH

Drawn By: JACOB YURKOVICH
Revision Date: 05-06-24

NOTES:

INTO THE WOODS

Project: UGA SCENIC II

Producer: ACT 2. VILLAGE

Date:

05-06-24

Scale:

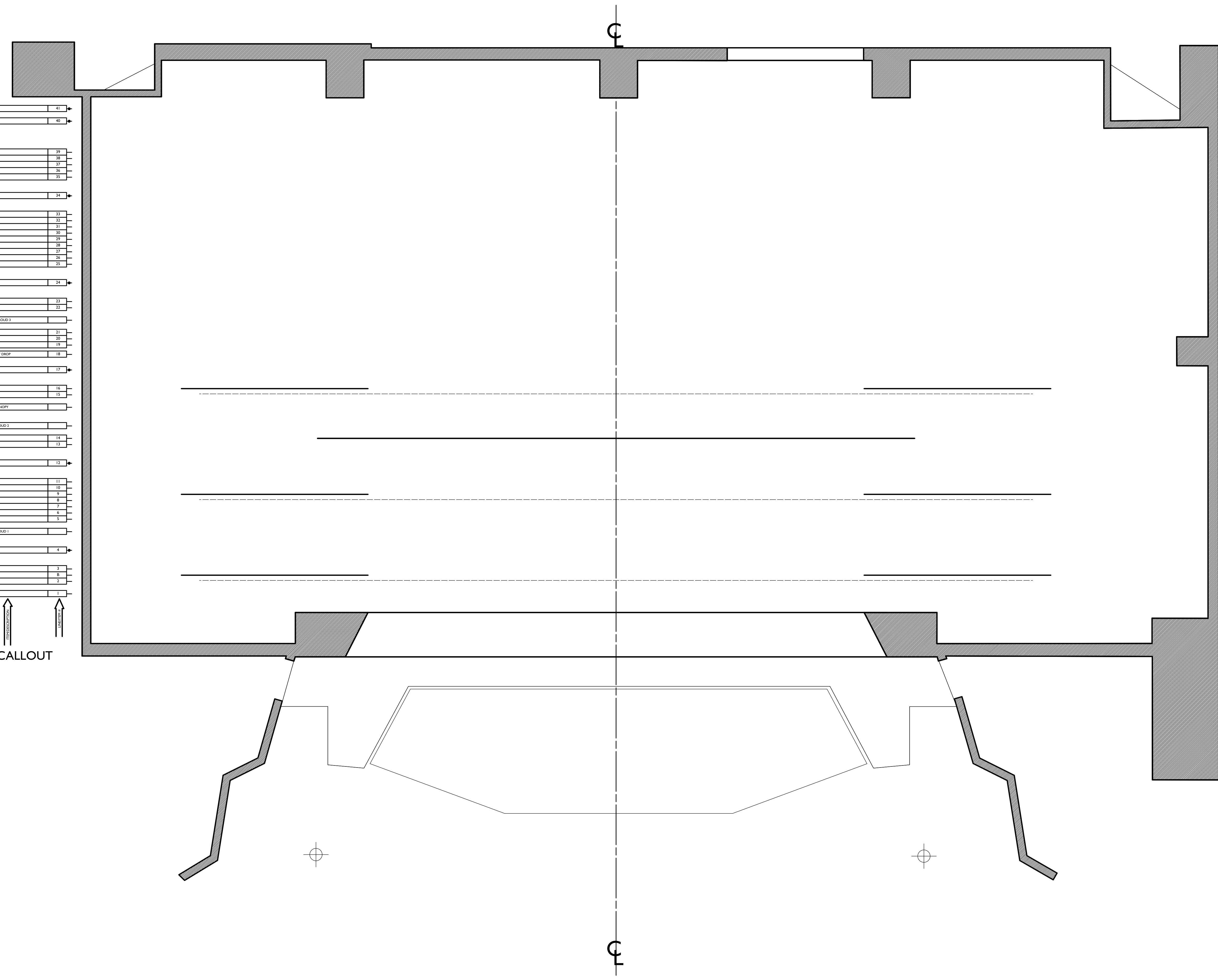
1/4"=1'

Sheet:

13.
OF
16

41'-0"	ELECTRIC 7	41
39'-0"	ELECTRIC 6	40
37'-0"		39
36'-0"		38
35'-0"		37
35'-00		35
33'-0"	ELECTRIC 5	34
32'-0"		33
31'-0"		32
30'-0"		31
30'-0"		30
29'-0"		29
28'-0"		28
27'-0"		27
26'-0"		26
25'-0"		25
24'-0"	ELECTRIC 4	24
23'-0"		23
22'-0"		22
21'-0"	ORCHESTRA CLOUD 3	21
20'-0"		20
19'-0"	FOREST DROP 2	19
18'-0"	EDGE OF FOREST DROP	18
17'-0"	ELECTRIC 3	17
16'-0"	LEGS 3	16
15'-0"	BORDER 3	15
14'-0"	ORCHESTRA CANOPY	14
13'-0"	ORCHESTRA CLOUD 2	13
12'-0"	FOREST DROP 3	12
11'-0"	FOREST DROP 1	11
10'-0"	ELECTRIC 2	10
9'-0"		9
8'-0"	LEGS 2	8
7'-0"	BORDER 2	7
6'-0"		6
5'-0"	TREE GRASS	5
4'-0"	ORCHESTRA CLOUD 1	4
3'-0"	ELECTRIC 1	3
2'-0"	LEGS 1	2
1'-0"	BORDER 1	1
0'-0"	PLANT CURTAIN	0

LINESSET CALLOUT



Designer/Contact Information:
JACOB YURKOVICH

Drawn By: JACOB YURKOVICH
Revision Date: 05-06-24

NOTES:

INTO THE WOODS

Producer: UGA SCENIC II

Purpose: ACT 2. FOREST

Project:

Date: 05-06-24

Scale: 1/4"=1'

Sheet:

14.
OF
16

EDGE OF FOREST DROP



FOREST DROP 1



FOREST DROP 3

FOREST DROP 2



DROPS SHOULD BE 24'X48'. CAN BE PAINTED OR DIGITALLY PRINTED.

Designer/Contact Information:
JACOB YURKOVICH

Drawn By: JACOB YURKOVICH
Revision Date: 05-06-24

NOTES:

Project: **INTO THE WOODS**

Producer: UGA SCENIC II

Purpose: **BACKDROPS**

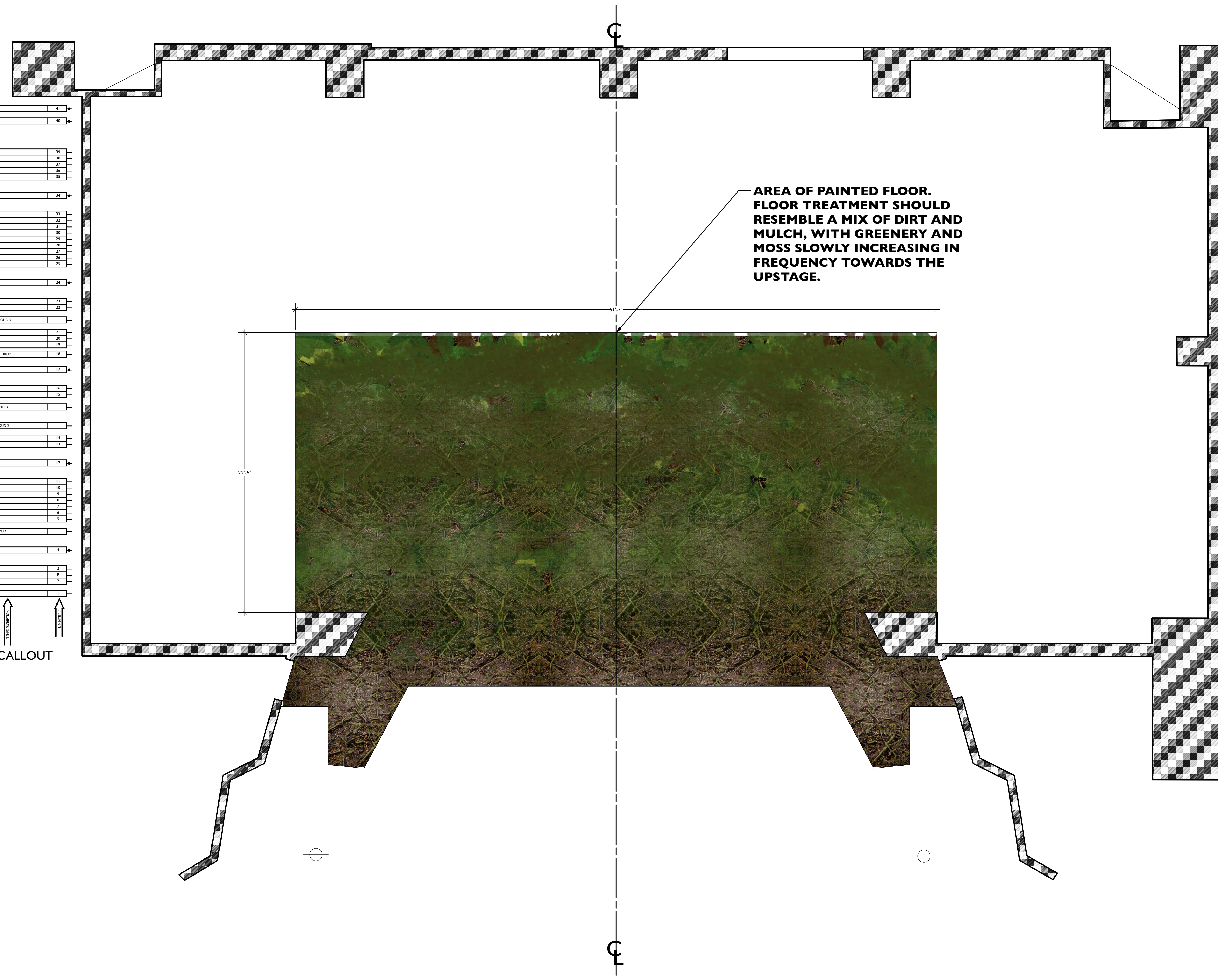
Date: 05-06-24

Scale: 1/4"=1'

Sheet:
15.
OF
16

40'-0"	ELECTRIC 7	41
39'-0"	ELECTRIC 6	40
37'-0"		39
36'-0"		38
35'-0"		37
35'-00		35
33'-0"	ELECTRIC 5	34
32'-0"		33
31'-0"		32
30'-0"		31
30'-0"		30
29'-0"		29
29'-0"		28
29'-0"		27
28'-0"		26
28'-0"		25
26'-0"	ELECTRIC 4	24
25'-0"		23
24'-0"		22
23'-0"	ORCHESTRA CLOUD 3	
22'-0"		21
22'-0"		20
21'-0"	FOREST DROP 2	19
20'-0"	EDGE OF FOREST DROP	18
19'-0"	ELECTRIC 3	17
18'-0"	LEGS 3	16
17'-0"	BORDER 3	15
16'-0"	ORCHESTRA CANOPY	
15'-0"	ORCHESTRA CLOUD 2	
14'-0"	FOREST DROP 3	14
13'-0"	FOREST DROP 1	13
12'-0"	ELECTRIC 2	12
11'-0"		11
10'-0"		10
9'-0"	LEGS 2	9
8'-0"	BORDER 2	8
8'-0"		7
8'-0"		6
7'-0"	TREE GRASS	5
6'-0"	ORCHESTRA CLOUD 1	
5'-0"	ELECTRIC 1	4
3'-0"		3
2'-0"	LEGS 1	2
2'-0"	BORDER 1	2
1'-0"	MAIN CURTAIN	1

LINESSET CALLOUT



Designer/Contact Information:
JACOB YURKOVICH

Drawn By: JACOB YURKOVICH
Revision Date: 05-06-24

NOTES:

Project: INTO THE WOODS

Producer: UGA SCENIC II
Purpose: FLOOR TREATMENT

Date: 05-06-24

Scale: 1/4"=1'

Sheet: 16. OF 16