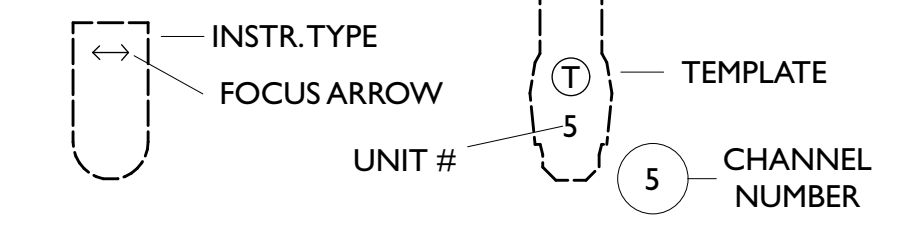


- 10deg S4 @ 575w
- 14deg S4 @ 575w
- 14deg S4 @ 750w
- 19deg S4 @ 750w
- 26deg S4 @ 750w
- 36deg S4 @ 750w
- ETC Source4 Zoom 25-50deg @ 575w
- 19deg Source 4 w/SeasChanger @ 750w/165
- 14deg Source 4 w/SeasChanger @ 750w/165
- S4 PAR WFL
- PAR64-MFL @ 1kw
- PAR64-WFL @ 1kw
- Altman 65 6in Fresnel @ 750w
- Colortran 8in Fresnel @ 1kw
- USITT Practical @ TBD
- Selecon Aurora Cyc 3 @ 1kw
- Altman Spectra Cyc 100 @ 100 w
- ADJ Encore LP12z IP @ 187w
- ETC ColorSource PAR Narrow Round @ 90w
- ETC D40 Lustr SELR25 @ 110w
- Elation KL Par FCVNSP @ 284 w
- Chauvet Rogue R2 Spot @ 310w
- Elation Artiste Picasso @ 900 w
- HAZER @ 1.42kw
- FOGGER @ 730w

LEGEND



Revision Schedule

Ver	Date	Description
1	10-09-23	SHOP PREP
2	10-14-23	HANG PREP
3	11-09-23	POST-DRESS
4		

JACOB YURKOVICH LIGHTING DESIGN

(949) 280-5508 phone  
jry56120@uga.edu

THIS DRAWING REPRESENTS VISUAL CONCEPTS AND CONSTRUCTION SUGGESTIONS ONLY

IT DOES NOT REPLACE THE KNOWLEDGE AND ADVICE OF A LICENSED STRUCTURAL ENGINEER. THE DESIGNER IS UNQUALIFIED TO DETERMINE THE STRUCTURAL OR ELECTRICAL APPROPRIATENESS OF THIS DESIGN, AND WILL NOT ASSUME RESPONSIBILITY FOR IMPROPER ENGINEERING, CONSTRUCTION, HANDLING, OR USE OF EQUIPMENT.

ALL MATERIALS AND CONSTRUCTION MUST COMPLY WITH THE MOST STRINGENT APPLICABLE FEDERAL AND LOCAL FIRE SAFETY, ENERGY, AND ENVIRONMENTAL CODES.

Produced By UNIVERSITY OF GEORGIA

DIRECTOR: JUSTIN ANDERSON  
SCENERY BY: JACK STOFFEL  
COSTUMES BY: NOEL CORBIN  
LIGHTING BY: JACOB YURKOVICH  
ASSISTED BY: HANNAH FORDHAM  
PROJECTIONS BY: JACK STOFFEL  
SOUND BY: JEANNIE THOMAS  
PRODUCTION ELECTRICIAN: JEREMY WEING  
TECHNICAL DIRECTOR: ALI HOOKS

MOTHER COURAGE

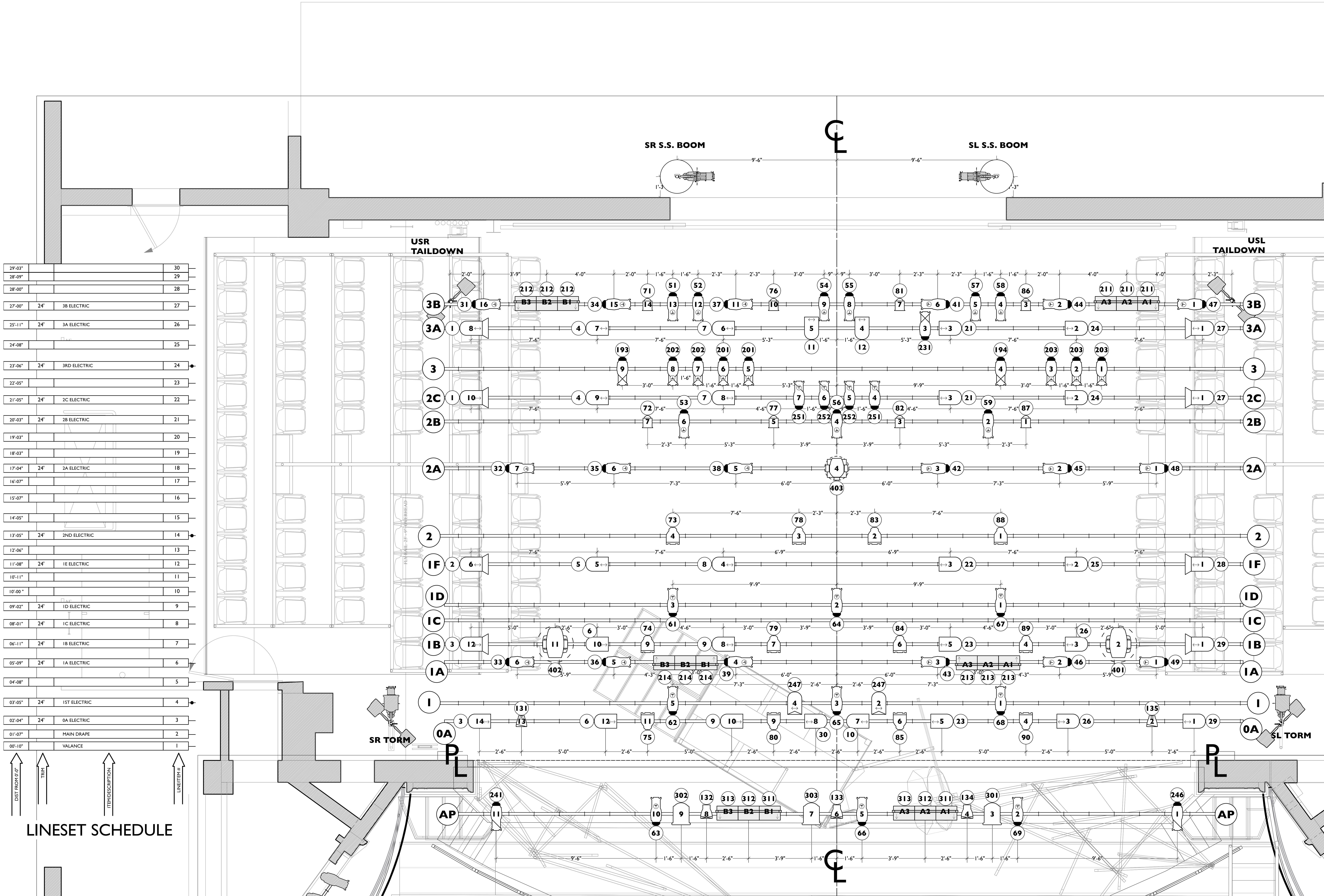
FINE ARTS STAGE  
ATHENS, GA

OVERHEAD PLOT

SCALE: 1/2"=1'-0" EXCEPT WHERE NOTED

DATE: 11-09-23

DRAWN: JY 1 of 5



LINESET SCHEDULE

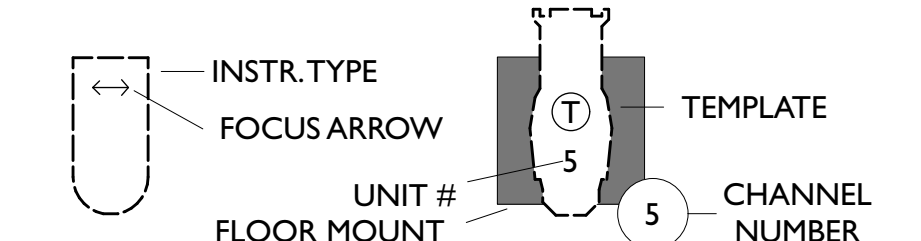
29'-03"		30	
28'-09"		29	
28'-00"		28	
27'-00"	24'	3B ELECTRIC	27
25'-11"	24'	3A ELECTRIC	26
24'-08"			25
23'-06"	24'	3RD ELECTRIC	24
22'-05"			23
21'-05"	24'	2C ELECTRIC	22
20'-03"	24'	2B ELECTRIC	21
19'-03"			20
18'-03"			19
17'-04"	24'	2A ELECTRIC	18
16'-07"			17
15'-07"			16
14'-05"			15
13'-05"	24'	2ND ELECTRIC	14
12'-06"			13
11'-08"	24'	1E ELECTRIC	12
10'-11"			11
10'-00"			10
09'-02"	24'	1D ELECTRIC	9
08'-01"	24'	1C ELECTRIC	8
06'-11"	24'	1B ELECTRIC	7
05'-09"	24'	1A ELECTRIC	6
04'-08"			5
03'-05"	24'	1ST ELECTRIC	4
02'-04"	24'	0A ELECTRIC	3
01'-07"		MAIN DRAPE	2
00'-10"		VALANCE	1

- NOTES:
- ~ ALL UNITS HANG ON 1'-6" CENTERS UNLESS OTHERWISE NOTED
  - ~ PROVIDE SPARE CIRCUITS AT ALL MAJOR LOCATIONS (IF POSSIBLE)
  - ~ DISCUSS ALL UNITS MOUNTED ON SCENERY
  - ~ HANG ALL UNITS IN ORIENTATION AS SHOWN
  - ~ PRE-ROTATE PAR AXES IN ORIENTATION AS SHOWN
  - ~ ALL ELECTRIC TRIMS ARE TAKEN FROM SHOW DECK TO PIPE
  - ~ ALL BOOMS SHOULD BE RIGID AND SECURE
  - ~ BOOM POSITIONS ARE TAKEN TO THE BOOM PIPE, NOT THE INSTRUMENTS
  - ~ BOOM MEASUREMENTS ARE TO BE TAKEN FROM SHOW DECK TO C-CLAMP
  - ~ TAIL DOWN MEASUREMENTS ARE TO BE TAKEN FROM ELECTRIC PIPE TO C-CLAMP
  - ~ DROP ALL COLOR AND GOBOS PRIOR TO FOCUS.
  - ~ ON FOCUS DAY, HAVE EXTRA R119, R132, TOP HATS, HALF HATS, AND BARN DOORS

**KEY**

- 10deg S4 @ 575w
- 14deg S4 @ 575w
- 14deg S4 @ 750w
- 19deg S4 @ 750w
- 26deg S4 @ 750w
- 36deg S4 @ 750w
- ETC Source4 Zoom 25-50deg @ 575w
- 19deg Source 4 w/SeaChanger @ 750w/165
- 14deg Source 4 w/SeaChanger @ 750w/165
- S4 PAR WFL @ 750w
- PAR64-MFL @ 1kw
- PAR64-WFL @ 1kw
- Altman 65 6in Fresnel @ 750w
- Colortran 8in Fresnel @ 1kw
- USITT Practical
- Selecon Aurora Cyc 3 @ 1kw
- Altman Spectra Cyc 100 @ 100 w
- ADJ Encore LP12z IP @ 187w
- ETC ColorSource PAR Narrow Round @ 90w
- ETC D40 Lustr SELR25 @ 110w
- Elation KL Par FCVNSP @ 284 w
- Chauvet Rogue R2 Spot @ 310w
- Elation Artiste Picasso @ 900 w
- Astra Hybrid 330 @ 330w
- HAZER @ 1.42kw
- FOGGER @ 700w
- FOGGER \* @ 730w

**LEGEND**



**Revision Schedule**

Ver	Date	Description
1	10-09-23	SHOP PREP
2	10-14-23	HANG PREP
3	11-09-23	POST-DRESS
4		

**JACOBYURKOVICH LIGHTING DESIGN**

(949) 280-5508 phone  
jry56120@uga.edu

**THIS DRAWING REPRESENTS VISUAL CONCEPTS AND CONSTRUCTION SUGGESTIONS ONLY**

IT DOES NOT REPLACE THE KNOWLEDGE AND ADVICE OF A LICENSED STRUCTURAL ENGINEER. THE DESIGNER IS UNQUALIFIED TO DETERMINE THE STRUCTURAL OR ELECTRICAL APPROPRIATENESS OF THIS DESIGN, AND WILL NOT ASSUME RESPONSIBILITY FOR IMPROPER ENGINEERING, CONSTRUCTION, HANDLING, OR USE OF EQUIPMENT.

ALL MATERIALS AND CONSTRUCTION MUST COMPLY WITH THE MOST STRINGENT APPLICABLE FEDERAL AND LOCAL FIRE SAFETY, ENERGY, AND ENVIRONMENTAL CODES.

**Produced By UNIVERSITY OF GEORGIA**

DIRECTOR: JUSTIN ANDERSON  
SCENERY BY: JACK STOFFEL  
COSTUMES BY: NOEL CORBIN  
LIGHTING BY: JACOBYURKOVICH  
ASSISTED BY: HANNAH FORDHAM  
PROJECTIONS BY: JACK STOFFEL  
SOUND BY: JEANNIE THOMAS  
PRODUCTION ELECTRICIAN: JEREMY WEING  
TECHNICAL DIRECTOR: ALI HOOKS

**MOTHER COURAGE**

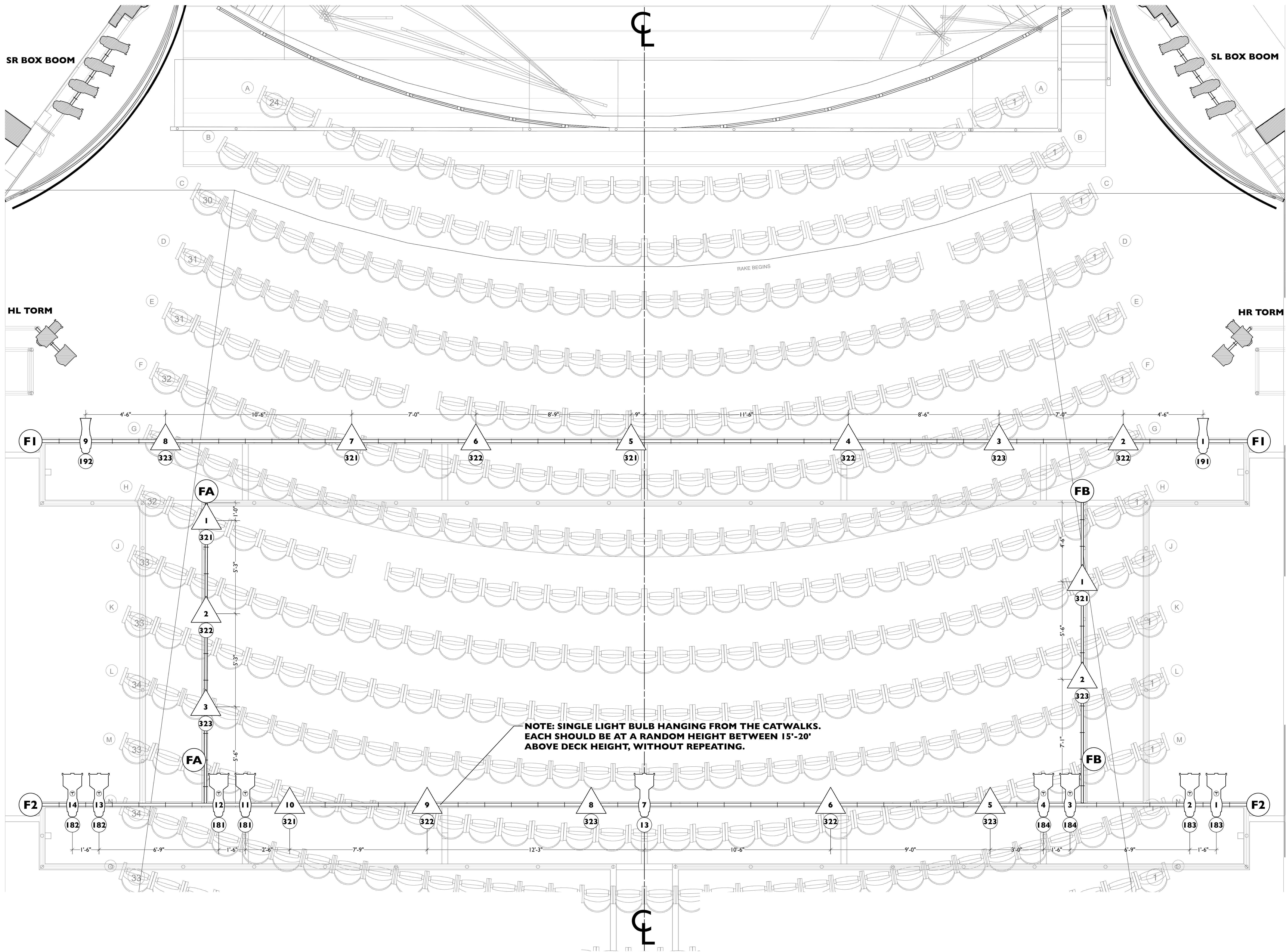
FINE ARTS STAGE  
ATHENS, GA

**FOH PLOT**

SCALE: 1/2"=1'-0" EXCEPT WHERE NOTED

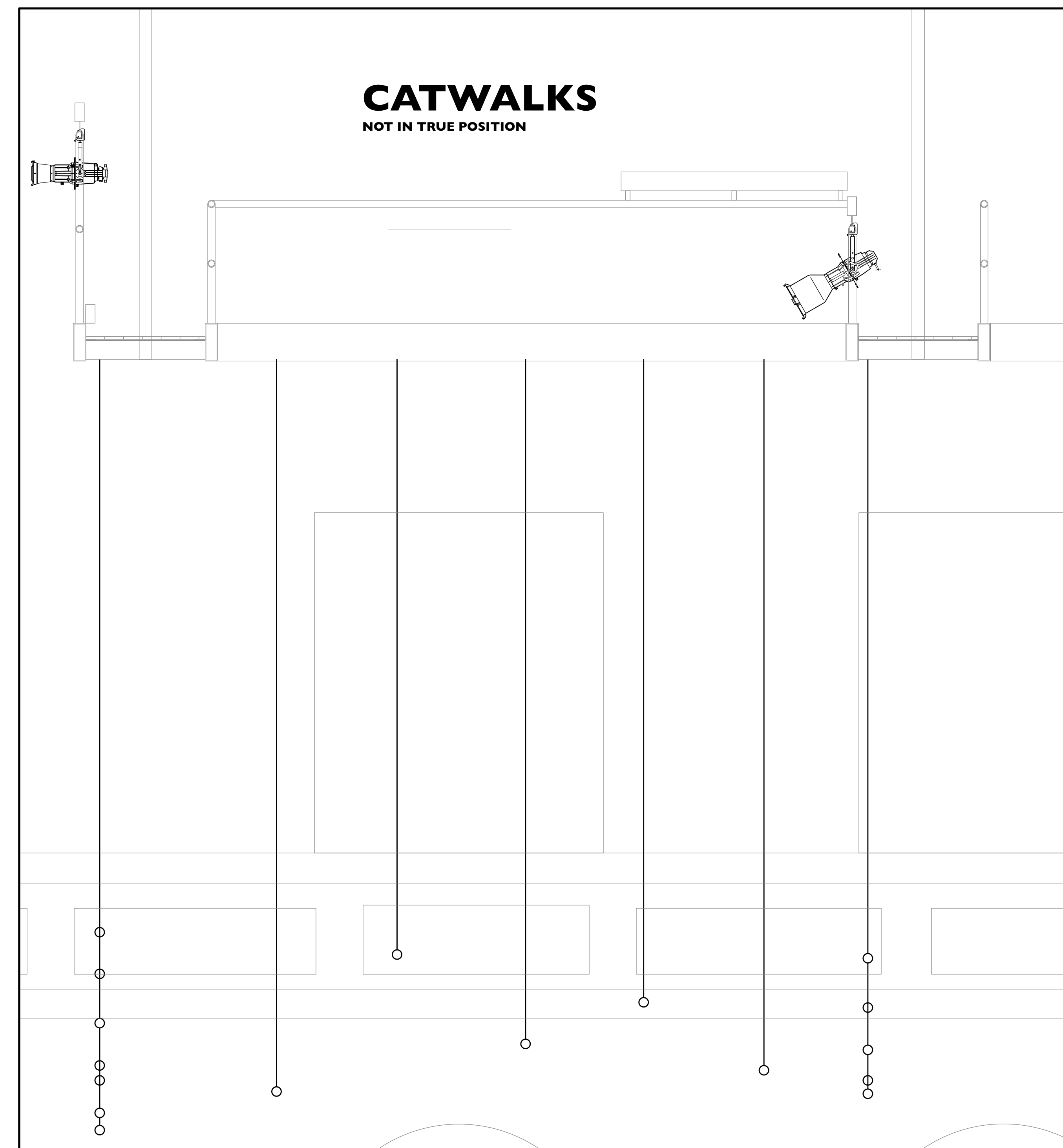
DATE: 11-09-23

DRAWN: JY



**NOTE: SINGLE LIGHT BULB HANGING FROM THE CATWALKS. EACH SHOULD BE AT A RANDOM HEIGHT BETWEEN 15'-20' ABOVE DECK HEIGHT, WITHOUT REPEATING.**

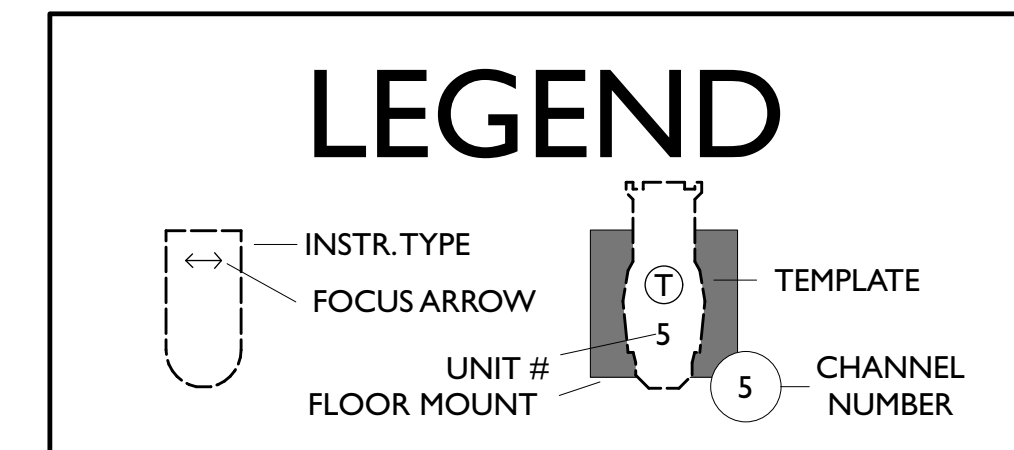
- NOTES:**
- ~ ALL UNITS HANG ON 1'-6" CENTERS UNLESS OTHERWISE NOTED
  - ~ PROVIDE SPARE CIRCUITS AT ALL MAJOR LOCATIONS (IF POSSIBLE)
  - ~ DISCUSS ALL UNITS MOUNTED ON SCENERY
  - ~ HANG ALL UNITS IN ORIENTATION AS SHOWN
  - ~ PRE-ROTATE PAR AXES IN ORIENTATION AS SHOWN
  - ~ ALL ELECTRIC TRIMS ARE TAKEN FROM SHOW DECK TO PIPE
  - ~ ALL BOOMS SHOULD BE RIGID AND SECURE
  - ~ BOOM POSITIONS ARE TAKEN TO THE BOOM PIPE, NOT THE INSTRUMENTS
  - ~ BOOM MEASUREMENTS ARE TO BE TAKEN FROM SHOW DECK TO C-CLAMP
  - ~ TAIL DOWN MEASUREMENTS ARE TO BE TAKEN FROM ELECTRIC PIPE TO C-CLAMP
  - ~ DROP ALL COLOR AND GOBOS PRIOR TO FOCUS.
  - ~ ON FOCUS DAY, HAVE EXTRA R119, R132, TOP HATS, HALF HATS, AND BARN DOORS



**LINESET SCHEDULE**

LINESET #	ITEM DESCRIPTION	TRIM	DIST FROM 0'-0"
1	VOLANCE		00'-00"
2	MAIN DRAPE		01'-07"
3	0A ELECTRIC		02'-04"
4	01ST ELECTRIC		02'-05"
5			04'-08"
6	1A ELECTRIC		05'-09"
7	1B ELECTRIC		06'-11"
8	1C ELECTRIC		06'-01"
9	1D ELECTRIC		09'-02"
10	02-00"		02'-00"
11	10'-11"		10'-11"
12	1E ELECTRIC		11'-08"
13	12'-00"		12'-00"
14	2ND ELECTRIC		13'-05"
15	14'-05"		14'-05"
16	15'-07"		15'-07"
17	16-07"		16-07"
18	17-04"		17-04"
19	18-03"		18-03"
20	19-03"		19-03"
21	20-03"		20-03"
22	21-05"		21-05"
23	22-05"		22-05"
24	23-06"		23-06"
25	24-08"		24-08"
26	25-11"		25-11"
27	26-00"		26-00"
28	26-00"		26-00"
29	26-00"		26-00"
30	27-03"		27-03"

- KEY**
- 10deg S4 @ 575w
  - 14deg S4 @ 575w
  - 14deg S4 @ 750w
  - 19deg S4 @ 750w
  - 26deg S4 @ 750w
  - 36deg S4 @ 750w
  - ETC Source4 Zoom 25-50deg @ 575w
  - 19deg Source 4 w/SeaChanger @ 750w/165
  - 14deg Source 4 w/SeaChanger @ 750w/165
  - S4 PAR WFL @ 750w
  - PAR64-MFL @ 1kw
  - PAR64-WFL @ 1kw
  - Altman 65 6in Fresnel @ 750w
  - Colortran 8in Fresnel @ 1kw
  - USITT Practical
  - Selecion Aurora Cyc 3 @ 1kw
  - Altman Spectra Cyc 100 @ 100 w
  - ADJ Encore LP12z IP @ 187w
  - ETC ColorSource PAR Narrow Round @ 90w
  - ETC D40 Lustr SELR25 @ 110w
  - Elation KL Par FCVNSP @ 284 w
  - Chauvet Rogue R2 Spot @ 310w
  - Elation Artiste Picasso @ 900 w
  - Astra Hybrid 330 @ 330w
  - HAZER @ 1.42kw
  - FOGGER @ 700w
  - FOGGER \* @ 730w



**Revision Schedule**

Ver	Date	Description
1	10-09-23	SHOP PREP
2	10-14-23	HANG PREP
3	11-09-23	POST-DRESS
4		

**JACOB YURKOVICH LIGHTING DESIGN**  
 (949) 280-5508 phone  
 jy56120@uga.edu

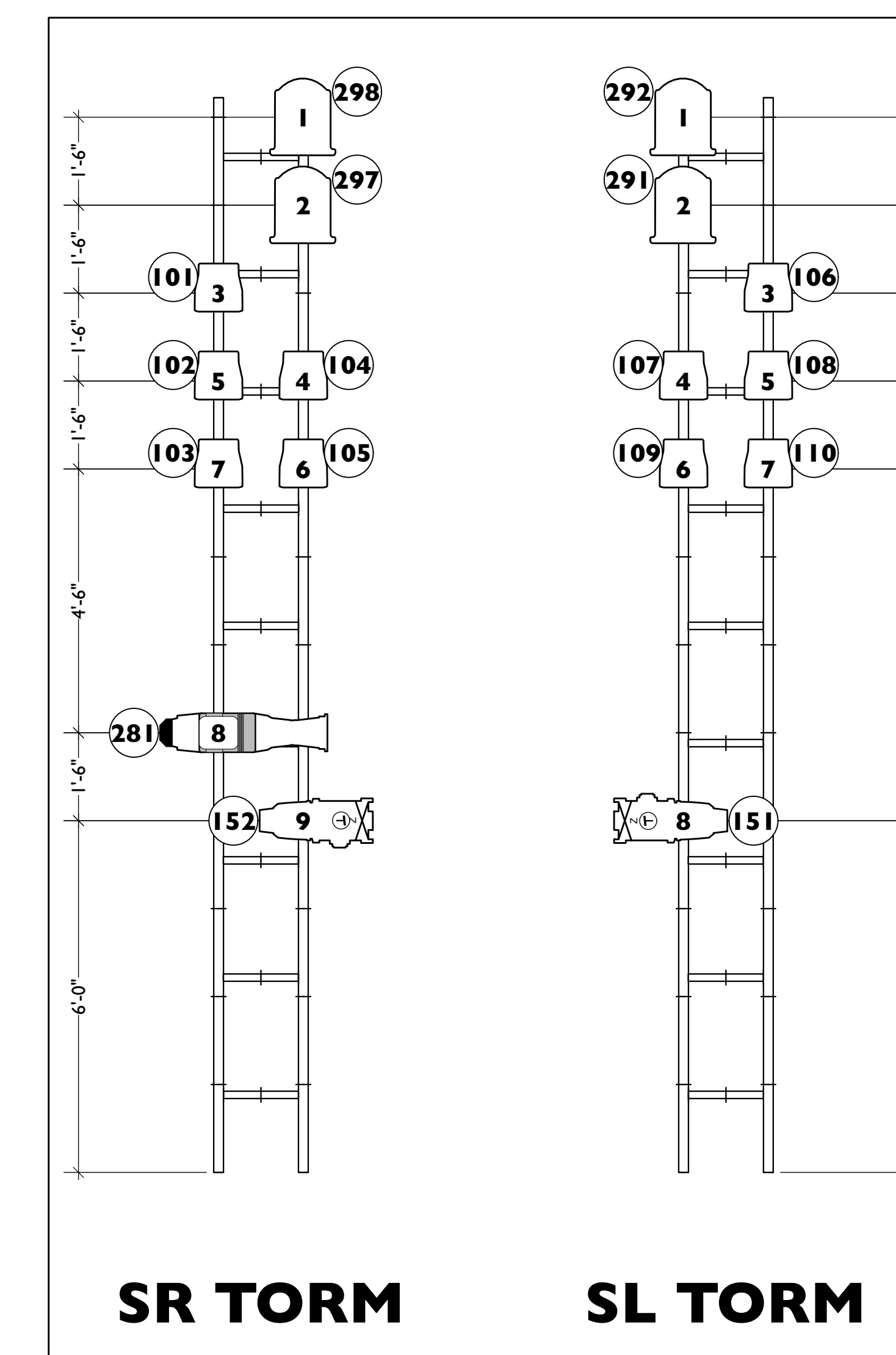
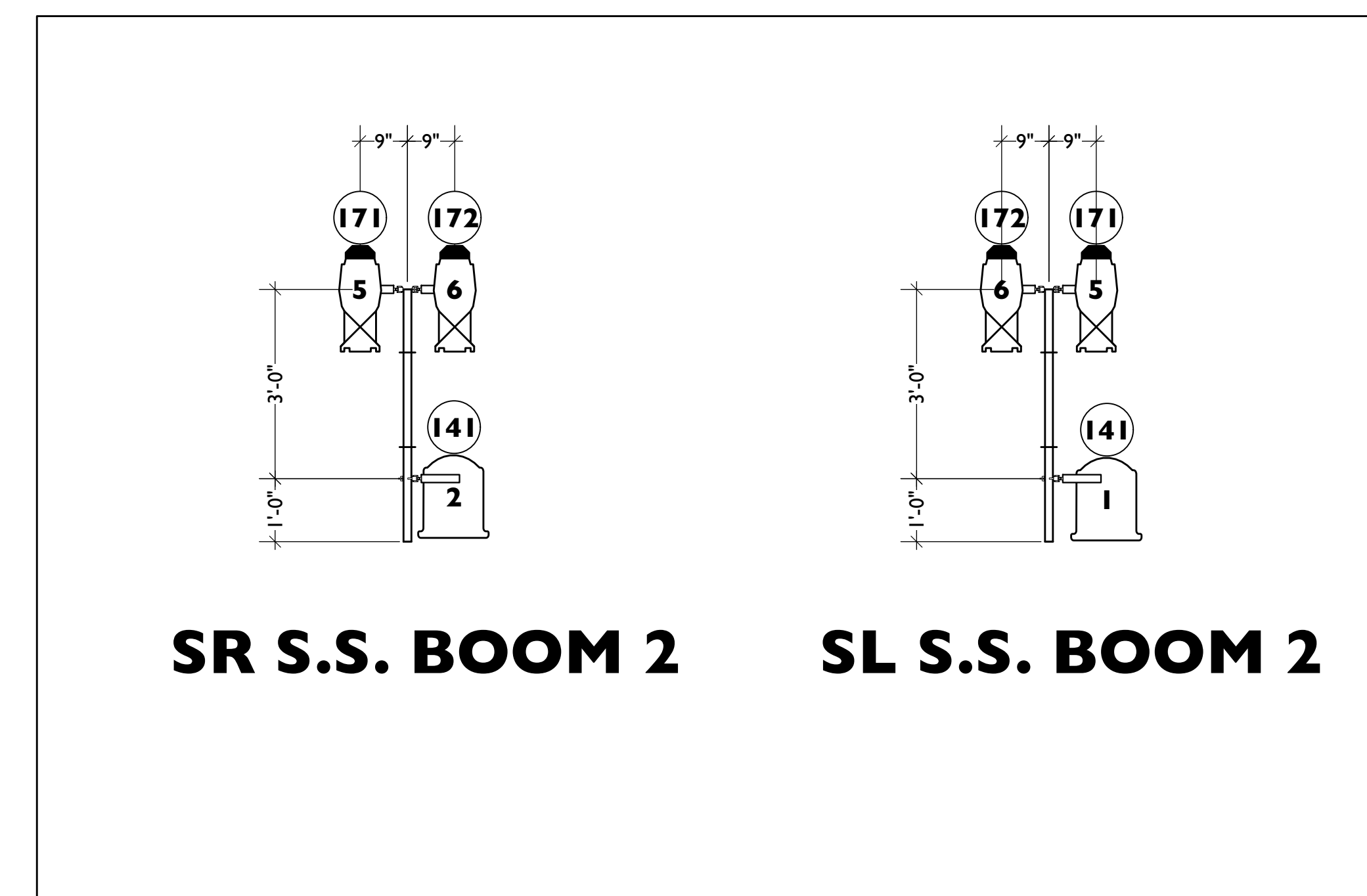
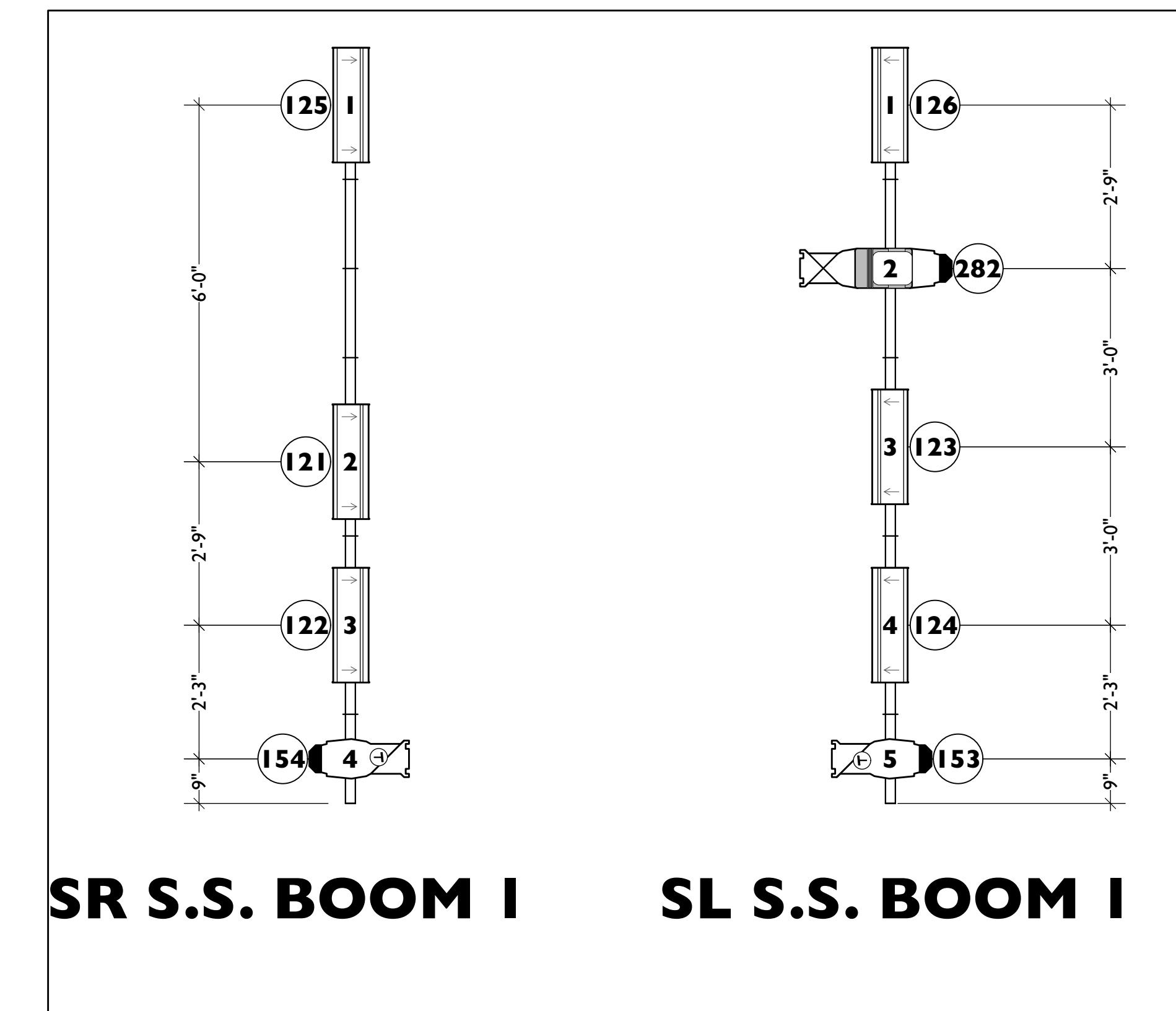
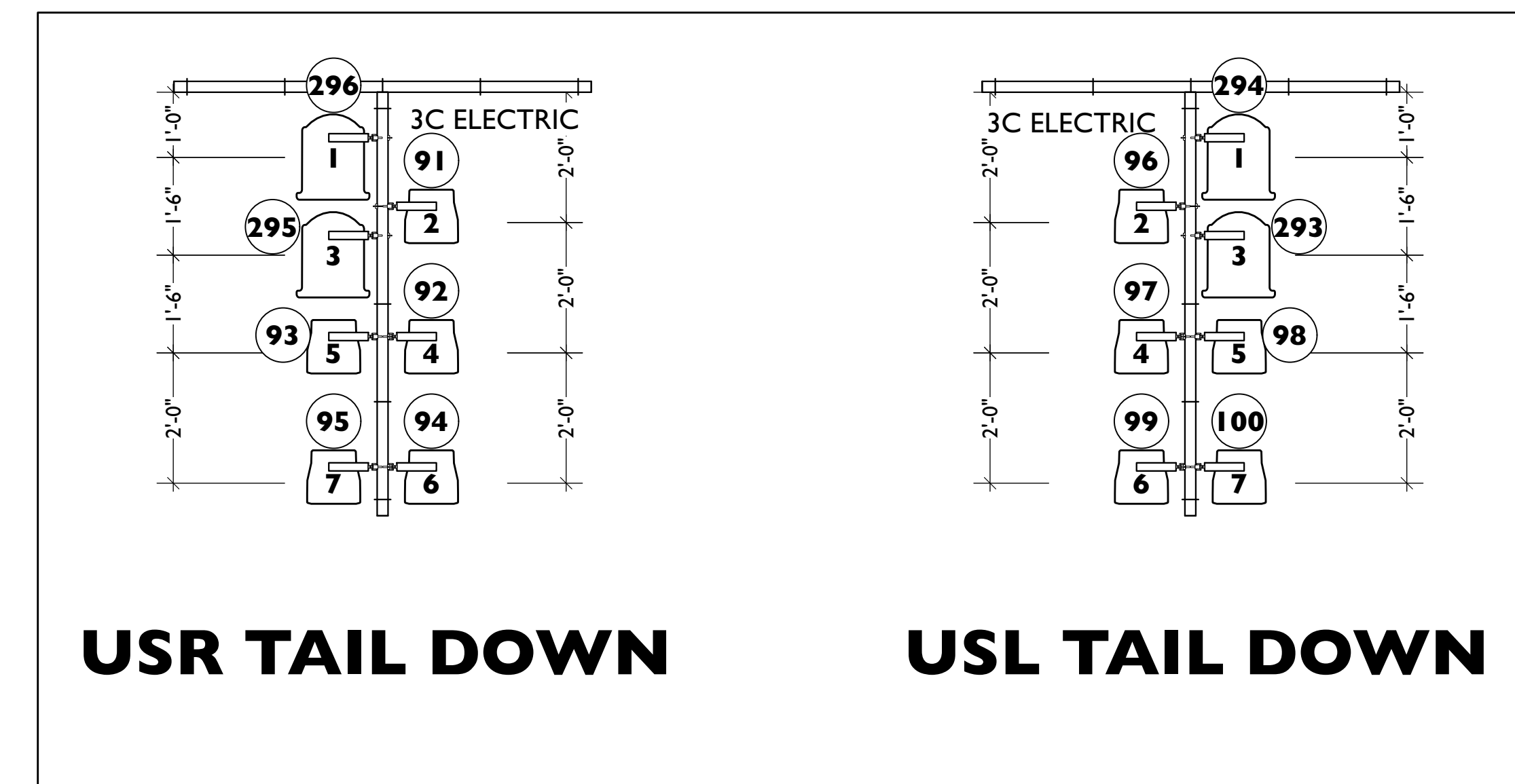
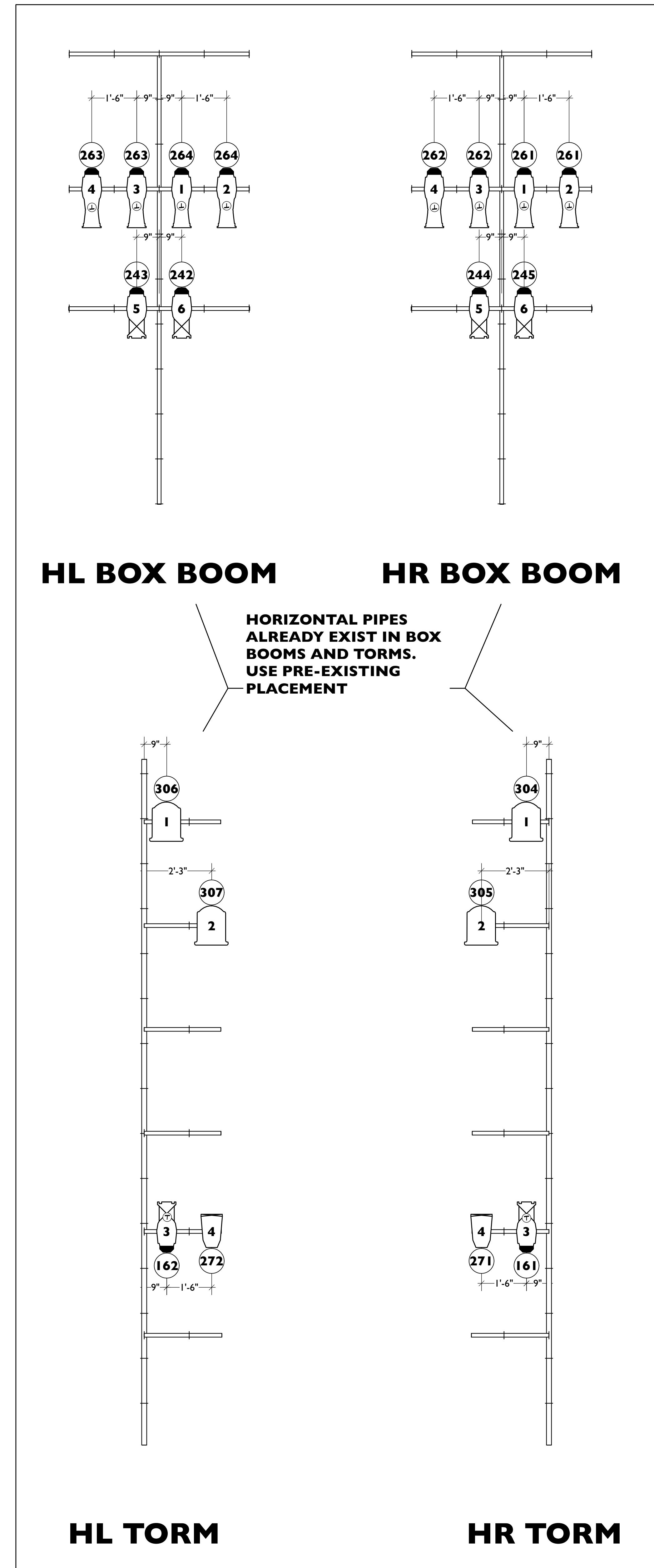
**THIS DRAWING REPRESENTS VISUAL CONCEPTS AND CONSTRUCTION SUGGESTIONS ONLY**  
 IT DOES NOT REPLACE THE KNOWLEDGE AND ADVICE OF A LICENCED STRUCTURAL ENGINEER. THE DESIGNER IS UNQUALIFIED TO DETERMINE THE STRUCTURAL OR ELECTRICAL APPROPRIATENESS OF THIS DESIGN, AND WILL NOT ASSUME RESPONSIBILITY FOR IMPROPER ENGINEERING, CONSTRUCTION, HANDLING, OR USE OF EQUIPMENT.  
 ALL MATERIALS AND CONSTRUCTION MUST COMPLY WITH THE MOST STRINGENT APPLICABLE FEDERAL AND LOCAL FIRE SAFETY, ENERGY, AND ENVIRONMENTAL CODES.

Produced By  
 UNIVERSITY OF GEORGIA  
 DIRECTOR: JUSTIN ANDERSON  
 SCENERY BY: JACK STOFFEL  
 COSTUMES BY: NIGEL CORBIN  
 LIGHTING BY: JACOB YURKOVICH  
 ASSISTED BY: HANNAH FORDHAM  
 PROJECTIONS BY: JACK STOFFEL  
 SOUND BY: JEANNIE THOMAS  
 PRODUCTION ELECTRICIAN: JEREMY WEING  
 TECHNICAL DIRECTOR: ALI HOOKS

**MOTHER COURAGE**  
 FINE ARTS STAGE  
 ATHENS, GA

**SECTION**

SCALE: 1/2"=1'-0" EXCEPT WHERE NOTED  
 DATE: 11-09-23  
 DRAWN: JY  
**3**  
 of 5



### KEY

- 10deg S4 @ 575w
- 14deg S4 @ 575w
- 14deg S4 @ 750w
- 19deg S4 @ 750w
- 26deg S4 @ 750w
- 36deg S4 @ 750w
- ETC Source4 Zoom 25-50deg @ 575w
- 19deg Source 4 w/SeaChanger @ 750w/165
- 14deg Source 4 w/SeaChanger @ 750w/165
- S4 PAR WFL @ 750w
- PAR64-MFL @ 1kw
- PAR64-WFL @ 1kw
- Altman 65 6in Fresnel @ 750w
- Colortran 8in Fresnel @ 1kw
- USITT Practical
- Selecon Aurora Cyc 3 @ 1kw
- Altman Spectra Cyc 100 @ 100 w
- ADJ Encore LP12z IP @ 187w
- ETC ColorSource PAR Narrow Round @ 90w
- ETC D40 Lustr SELR25 @ 110w
- Elation KL Par FCVNSP @ 284 w
- Chauvet Rogue R2 Spot @ 310w
- Elation Artiste Picasso @ 900 w
- Astra Hybrid 330 @ 330w
- HAZER @ 1.42kw
- FOGGER @ 700w
- FOGGER \* @ 730w

### LEGEND

- INSTR. TYPE
- FOCUS ARROW
- UNIT #
- FLOOR MOUNT
- TEMPLATE
- CHANNEL NUMBER

#### Revision Schedule

Ver	Date	Description
1	10-09-23	SHOP PREP
2	10-14-23	HANG PREP
3	11-09-23	POST-DRESS
4		

**JACOB YURKOVICH LIGHTING DESIGN**  
 (949) 280-5508 phone  
 jy56120@uga.edu

THIS DRAWING REPRESENTS VISUAL CONCEPTS AND CONSTRUCTION SUGGESTIONS ONLY. IT DOES NOT REPLACE THE KNOWLEDGE AND ADVICE OF A LICENSED STRUCTURAL ENGINEER. THE DESIGNER IS UNQUALIFIED TO DETERMINE THE STRUCTURAL OR ELECTRICAL APPROPRIATENESS OF THIS DESIGN, AND WILL NOT ASSUME RESPONSIBILITY FOR IMPROPER ENGINEERING, CONSTRUCTION, HANDLING, OR USE OF EQUIPMENT. ALL MATERIALS AND CONSTRUCTION MUST COMPLY WITH THE MOST STRINGENT APPLICABLE FEDERAL AND LOCAL FIRE SAFETY, ENERGY, AND ENVIRONMENTAL CODES.

Produced By  
 UNIVERSITY OF GEORGIA  
 DIRECTOR: JUSTIN ANDERSON  
 SCENERY BY: JACK STOFFEL  
 COSTUMES BY: NOEL CORBIN  
 LIGHTING BY: JACOB YURKOVICH  
 ASSISTED BY: HANNAH FORDHAM  
 PROJECTIONS BY: JACK STOFFEL  
 SOUND BY: JEANNIE THOMAS  
 PRODUCTION ELECTRICIAN: JEREMY WEING  
 TECHNICAL DIRECTOR: ALI HOOKS

## MOTHER COURAGE

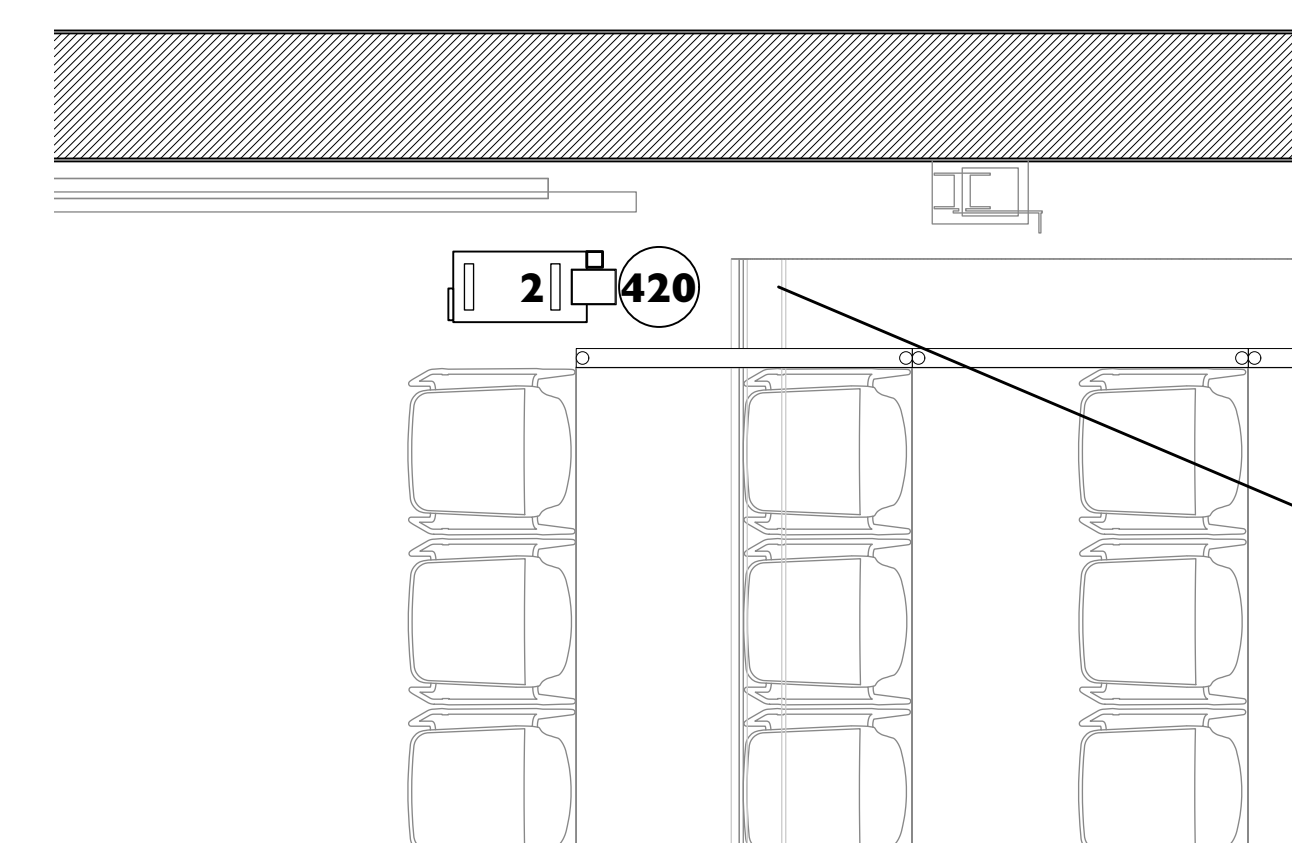
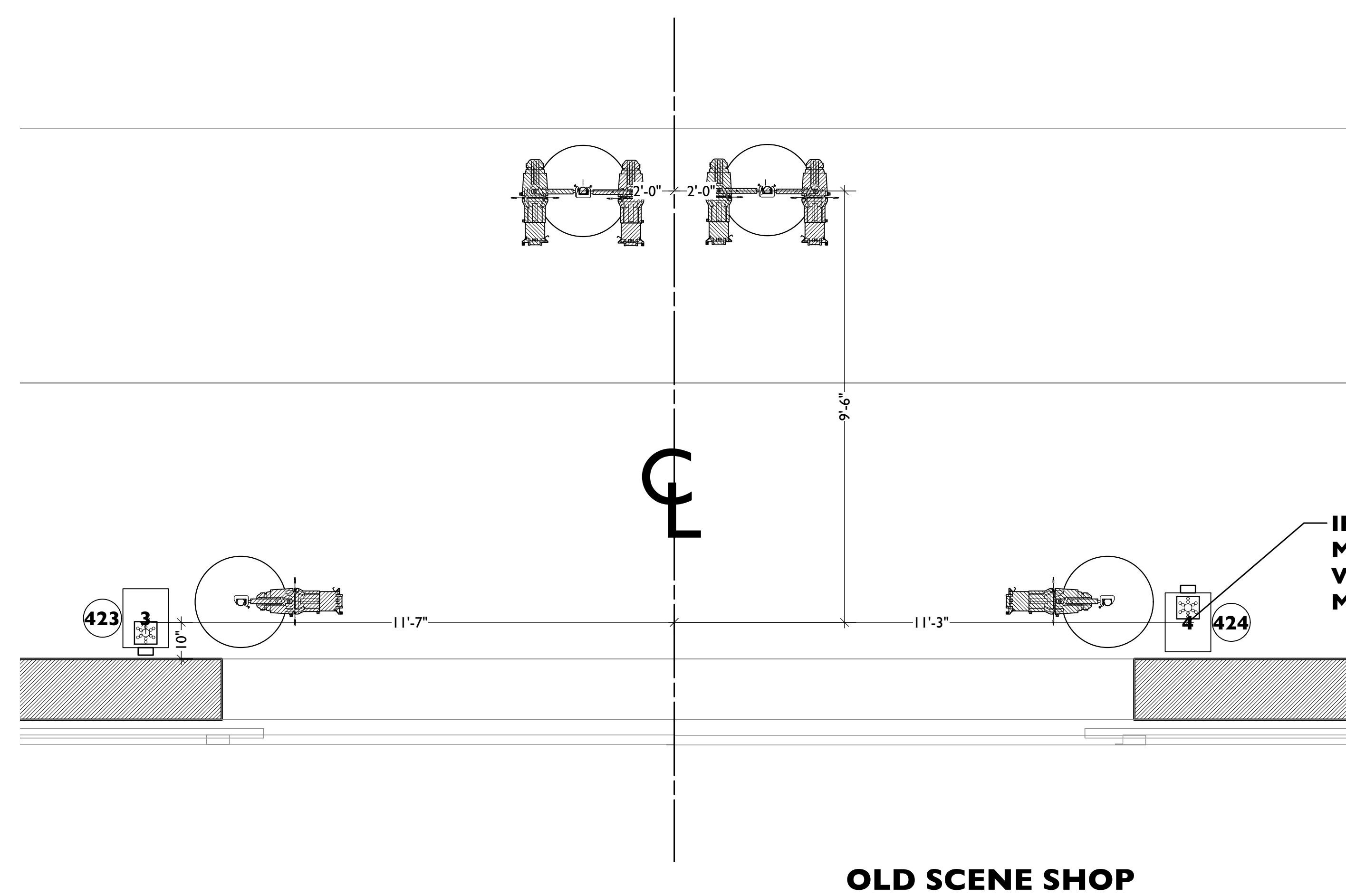
FINE ARTS STAGE  
 ATHENS, GA

**BOOMS, TAILS, & TORMS**

SCALE: 1/2"=1'-0" EXCEPT WHERE NOTED  
 DATE: 11-09-23  
 DRAWN: JY  
**4**  
 of 5

### NOTES:

- ~ ALL UNITS HANG ON 1'-6" CENTERS UNLESS OTHERWISE NOTED
- ~ PROVIDE SPARE CIRCUITS AT ALL MAJOR LOCATIONS (IF POSSIBLE)
- ~ DISCUSS ALL UNITS MOUNTED ON SCENERY
- ~ HANG ALL UNITS IN ORIENTATION AS SHOWN
- ~ PRE-ROTATE PAR AXES IN ORIENTATION AS SHOWN
- ~ ALL ELECTRIC TRIMS ARE TAKEN FROM SHOW DECK TO PIPE
- ~ ALL BOOMS SHOULD BE RIGID AND SECURE
- ~ BOOM POSITIONS ARE TAKEN TO THE BOOM PIPE, NOT THE INSTRUMENTS
- ~ BOOM MEASUREMENTS ARE TO BE TAKEN FROM SHOW DECK TO C-CLAMP
- ~ TAIL DOWN MEASUREMENTS ARE TO BE TAKEN FROM ELECTRIC PIPE TO C-CLAMP
- ~ DROP ALL COLOR AND GOBOS PRIOR TO FOCUS.
- ~ ON FOCUS DAY, HAVE EXTRA R119, R132, TOP HATS, HALF HATS, AND BARN DOORS

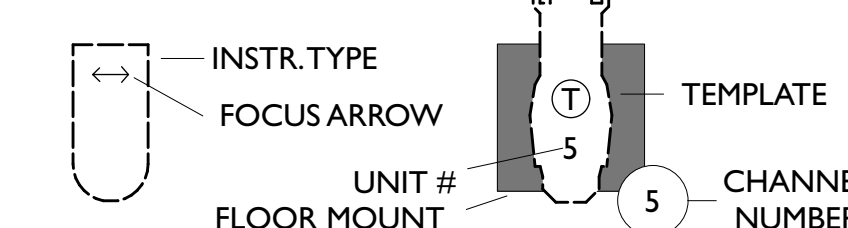


AWAITING SCENIC ORTHOGRAPHIC. SPEAK TO TERRI REGARDING INSTALLATION. WILL REQUIRE WIRELESS DMX

OIL DRUM

KEY	
	10deg S4 @ 575w
	14deg S4 @ 575w
	14deg S4 @ 750w
	19deg S4 @ 750w
	26deg S4 @ 750w
	36deg S4 @ 750w
	ETC Source4 Zoom 25-50deg @ 575w
	19deg Source 4 w/SeaChanger @ 750w/165
	14deg Source 4 w/SeaChanger @ 750w/165
	S4 PAR WFL @ 750w
	PAR64-MFL @ 1kw
	PAR64-WFL @ 1kw
	Altman 65 6in Fresnel @ 750w
	Colortran 8in Fresnel @ 1kw
	USITT Practical
	Selecon Aurora Cyc 3 @ 1kw
	Altman Spectra Cyc 100 @ 100 w
	ADJ Encore LP12z IP @ 187w
	ETC ColorSource PAR Narrow Round @ 90w
	ETC D40 Lustr SELR25 @ 110w
	Elation KL Par FCVNSP @ 284 w
	Chauvet Rogue R2 Spot @ 310w
	Elation Artiste Picasso @ 900 w
	Astra Hybrid 330 @ 330w
	HAZER @ 1.42kw
	FOGGER @ 700w
	FOGGER * @ 730w

LEGEND



Revision Schedule

Ver	Date	Description
1	10-09-23	SHOP PREP
2	10-14-23	HANG PREP
3	11-09-23	POST-DRESS
4		

JACOB YURKOVICH LIGHTING DESIGN

(949) 280-5508 phone  
jy56120@uga.edu

THIS DRAWING REPRESENTS VISUAL CONCEPTS AND CONSTRUCTION SUGGESTIONS ONLY

IT DOES NOT REPLACE THE KNOWLEDGE AND ADVICE OF A LICENSED STRUCTURAL ENGINEER. THE DESIGNER IS UNQUALIFIED TO DETERMINE THE STRUCTURAL OR ELECTRICAL APPROPRIATENESS OF THIS DESIGN, AND WILL NOT ASSUME RESPONSIBILITY FOR IMPROPER ENGINEERING, CONSTRUCTION, HANDLING, OR USE OF EQUIPMENT.

ALL MATERIALS AND CONSTRUCTION MUST COMPLY WITH THE MOST STRINGENT APPLICABLE FEDERAL AND LOCAL FIRE SAFETY, ENERGY, AND ENVIRONMENTAL CODES.

Produced By  
UNIVERSITY OF GEORGIA

DIRECTOR: JUSTIN ANDERSON  
SCENERY BY: JACK STOFFEL  
COSTUMES BY: NOEL CORBIN  
LIGHTING BY: JACOB YURKOVICH  
ASSISTED BY: HANNAH FORDHAM  
PROJECTIONS BY: JACK STOFFEL  
SOUND BY: JEANNIE THOMAS

PRODUCTION ELECTRICIAN: JEREMY WEING  
TECHNICAL DIRECTOR: ALI HOOKS

MOTHER COURAGE

FINE ARTS STAGE  
ATHENS, GA

DECK PLOT

SCALE: 1/2"=1'-0"

EXCEPT WHERE NOTED

DATE: 11-09-23

DRAWN: JY

5

of 5

NOTES:

- ~ ALL UNITS HANG ON 1'-6" CENTERS UNLESS OTHERWISE NOTED
- ~ PROVIDE SPARE CIRCUITS AT ALL MAJOR LOCATIONS (IF POSSIBLE)
- ~ DISCUSS ALL UNITS MOUNTED ON SCENERY
- ~ HANG ALL UNITS IN ORIENTATION AS SHOWN
- ~ PRE-ROTATE PAR AXES IN ORIENTATION AS SHOWN
- ~ ALL ELECTRIC TRIMS ARE TAKEN FROM SHOW DECK TO PIPE
- ~ ALL BOOMS SHOULD BE RIGID AND SECURE
- ~ BOOM POSITIONS ARE TAKEN TO THE BOOM PIPE, NOT THE INSTRUMENTS
- ~ BOOM MEASUREMENTS ARE TO BE TAKEN FROM SHOW DECK TO C-CLAMP
- ~ TAIL DOWN MEASUREMENTS ARE TO BE TAKEN FROM ELECTRIC PIPE TO C-CLAMP
- ~ DROP ALL COLOR AND GOBOS PRIOR TO FOCUS.
- ~ ON FOCUS DAY, HAVE EXTRA R119, R132, TOP HATS, HALF HATS, AND BARN DOORS